

2002

2002 Faculty Bibliography of Publications

Marylouise Lindsey

Tim Mason

Follow this and additional works at: <http://digitalcommons.hsc.unt.edu/facbib>

 Part of the [Medicine and Health Sciences Commons](#)

Recommended Citation

Lindsey, Marylouise and Mason, Tim, "2002 Faculty Bibliography of Publications" (2002). *Bibliography of Publications*. Paper 4.
<http://digitalcommons.hsc.unt.edu/facbib/4>

This Article is brought to you for free and open access by the Gibson D. Lewis Health Science Library at UNTHSC Scholarly Repository. It has been accepted for inclusion in Bibliography of Publications by an authorized administrator of UNTHSC Scholarly Repository. For more information, please contact Tom.Lyons@unthsc.edu.

2002 Bibliography of Publications

Compiled and edited by
Marylouise Lindsey
Library Associate
and
Tim Mason, M.L.S.
Technical Services Librarian

Gibson D. Lewis Health Science Library
University of North Texas Health Science Center at Fort Worth

June 2003

Table of Contents

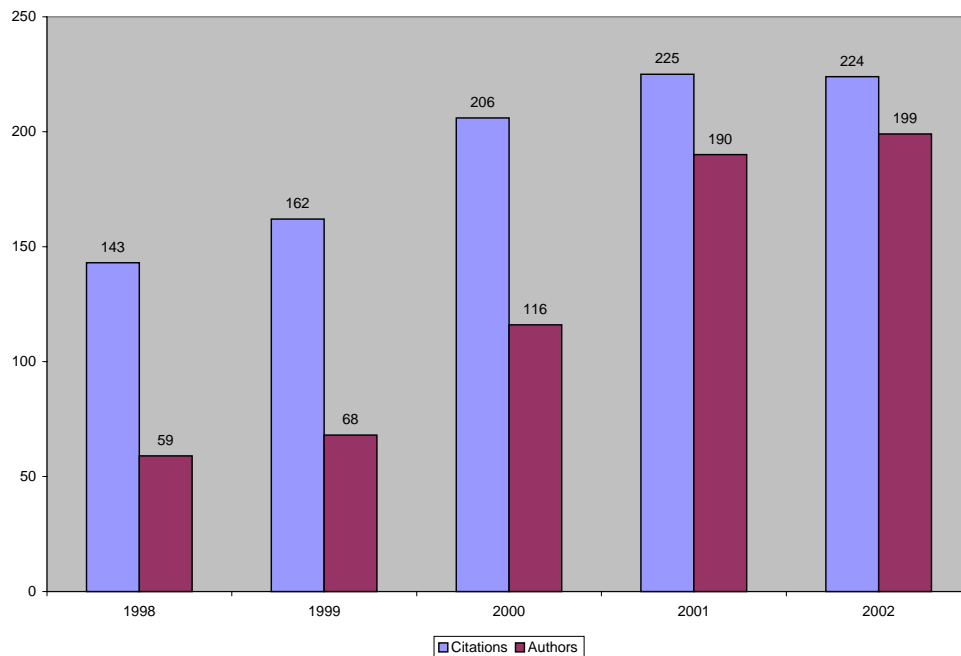
Introduction	iii
Summary of 2002 Publications by Department	iv
List of Journals	vi
Texas College of Osteopathic Medicine and Graduate School of Biomedical Sciences	1
Cell Biology and Genetics	1
Education	3
Family Medicine	4
Information Technology Services	7
Integrative Physiology	7
Internal Medicine	12
Manipulative Medicine	15
Molecular Biology and Immunology	16
Pharmacology and Neuroscience	24
Research and Biotechnology	30
Surgery	30
School of Public Health	31
Biostatistics	31
Environmental and Occupational Health	32
Epidemiology	34
Health Management and Policy	35
Social and Behavioral Sciences	37
Students	39
Texas College of Osteopathic Medicine	39
Graduate School of Biomedical Sciences	40
School of Public Health	44
Author Index	46

Introduction

The 2002 Bibliography of Publications cites journal articles, books, book chapters, editorial letters, and book reviews, both print and electronic, published by 199 authors under the auspices of the University of North Texas Health Science Center at Fort Worth during the calendar year. We have also included 10 citations from 2001 which were not discovered in time to be included last year. The accuracy of references has been verified. This 2002 bibliography, containing 234 unique citations, provides a comprehensive listing of the publications of faculty, staff, and students, and an overview of their accomplishments and research interests.

Entries are grouped by school, then by department, and arranged alphabetically by author within each department. There are separate sections for students of the Texas College of Osteopathic Medicine, the Graduate School of Biomedical Sciences, and the School of Public Health. For collaborative works, the entry is cited under each author. The format used to cite publications follows the style established by the National Library of Medicine.

The bibliography is also available in electronic format on the Gibson D. Lewis Health Science Library's web site: <http://library.hsc.unt.edu>.



Summary of 2002 Publications by Department*

Texas College of Osteopathic Medicine



Graduate School of Biomedical Sciences

Cell Biology and Genetics (15)

Agarwal, Neeraj (4)
Agarwal, Rajnee (1)
Brun, Anne Marie (3)
Cammarata, Patrick R. (1)
Collier, Robert J. (1)
Garner, Margaret H. (2)
McCartney, Mitchell D. (1)
Moor, Andrea N. (1)
Oakford, Lawrence X. (1)
Reeves, Rustin E. (1)
Roque, Rouel S. (1)
Sheedlo, Harold J. (1)
Wordinger, Robert J. (4)

Education (4)

Broyles, Kathy (1)
Broyles, Michelle (1)
Burgard, Daniel E. (1)
DeLozier, Kim (1)
Johnson, Lynn F. (1)
Shores, Jay H. (2)

Family Medicine (24)

Adams, Barbara D. (2)
Bowling, John R. (1)
Cage, Clifton A. (1)
Clark, Sharon E. (2)
Coleridge, Samuel T. (2)
Davis, Suzanne B. (2)
Franks, Susan F. (3)
Fulda, Kimberly G. (2)
Licciardone, John C. (9)
Marshall, Muriel A. (2)
Pagels, Patti (1)
Sanders, Mark A. (1)
Smith-Barbaro, Peggy A. (2)
Stockard, Alan R. (1)
Telford, Carolyn (2)

Information Technology Services (1)

Wallis, Cleatus J. (1)

Integrative Physiology (27)

Carroll, Joan F. (2)
Dimitrijevic, S. Dan (1)
Downey, H. Fred (5)
Kyser, Cheryl K. (2)
Mallet, Robert T. (1)
Martin, William J., II (5)
Ogoh, Shigehiko (3)
Raven, Peter B. (6)
Setty, Srinath (4)
Smith, Michael L. (6)
Sun, Jie (1)
Tune, Johnathan D. (5)
Wasmund, Wendy E. (5)
Zong, Pu (2)

Internal Medicine (29)

Blanck, Ronald R. (3)
Clearfield, Michael B. (4)
Hall, James R. (2)
Jimenez, Cynthia (1)
Knebl, Janice A. (1)
McConathy, Walter J. (5)
Paranjape, Sulabha (1)
Pogoda, Janice M. (6)
Rubin, Bernard R. (1)
Schaller, Frederick A. (1)
Vasenius, Keith A. (1)
Weis, Stephen E. (10)
Willis, John M. (1)

Manipulative Medicine (9)

Blake, Brooks M. (1)
Gamber, Russell G. (4)
Gish, Eric E. (1)
McGill, Jerry C. (2)
Stoll, Scott T. (2)

Molecular Biology and Immunology (36)

Akopova, Irina S. (1)
Andreev, Oleg A. (2)

Basu, Alakananda (4)
Bhatt, Harshika (1)
Borejdo, Julian (1)
Chuang, Samuel S. (1)
Clark, Abbot F. (5)
Conrad, Craig C. (2)
Easom, Richard A. (2)
Goldfarb, Ronald H. (5)
Gracy, Robert W. (3)
Harris, Ben G. (1)
Hart, Mark E. (2)
Huang, Jie (2)
Jackson, Debra W. (2)
Jones, Harlan P. (2)
Kim, Myoung H. (1)
Kitson, Richard P. (3)
Kumaresan, Pappa R. (1)
Lacko, Andras G. (1)
Malakowsky, Christina A. (2)
Mathew, Porunelloor A. (1)
Nair, Maya (1)
Rao, Jagannatha (2)
Reshetnyak, Yana K. (2)
Romeo, Tony (4)
Simecka, Jerry W. (5)
Sun, Xiang Le (2)
Suzuki, Kazushi (3)
Talent, John M. (2)
Weiner, Alan L. (2)
Wreyford, Natalie (1)
Xue, Yaming (2)

Pharmacology and Neuroscience (39)

Bell-Horner, Cathy L. (1)
Bergamini, Michael V.W. (1)
Das, Hriday K. (1)
de Fiebre, Christopher M. (2)
de Fiebre, Nancyellen C. (2)
DeSantis, Louis (1)
Dillon, Glenn H. (2)
Forster, Michael J. (4)
Gatch, Michael B. (4)
Huang, Ren-Qi (1)
Jung, Marianna E. (3)
King, George R. (1)
Konen, Jennifer (1)
Koulen, Peter (4)
Krishnamoorthy, Raghu (4)
Liu, Ran (2)

Pang, Iok-Hou (2)
Pastorcic, Martine G. (1)
Pinto, Gail (1)
Prasanna, Ganesh (2)
Selvig, Meghan K. (1)
Sharif, Naj A. (7)
Simpkins, James W. (4)
Singh, Meharvan (1)
Tran, Sophie (1)
Watson, David G. (1)
Yorio, Thomas (3)

**Research and
Biotechnology (1)**

Grant, Geoffrey R. (1)

Surgery (4)

Hahn, Marc B. (2)
Olivencia-Yurvati, Albert H. (2)

School of Public Health

Biostatistics (9)

Chen, Shande (1)
Cipher, Daisha J. (4)
Kimbrough, Ywanda (1)
Schumacker, Randall E. (2)
Singh, Karan P. (2)

**Environmental and
Occupational Health (16)**

Acevedo, Miguel F. (1)
Dickson, Kenneth L. (1)
Goven, Arthur J. (1)
Hudak, Paul F. (6)
Ji, Minhe (1)

Kennedy, James H. (1)
La Point, Thomas W. (2)
Trieff, Norman M. (2)
Waller, William T. (3)

Epidemiology (16)

Ajani, Umed A. (2)
Bayona-Celis, Manuel (3)
Blakley, Sally (1)
Caetano, Raul (7)
Rene, Antonio A. (3)
Wilkinson, Gregg S. (1)

**Health Management
and Policy (18)**

Hilsenrath, Peter E. (4)
Hooker, Roderick S. (8)
Hsu, Chiehwen E. (1)
Lykens, Kristine A. (1)
Schwarz, M. Roy (1)
Trevino, Fernando M. (2)

**Social and Behavioral
Sciences (15)**

Balcazar, Hector G. (3)
Coggin, Claudia (1)
Fridinger, Frederick W. (3)
Lurie, Sue G. (4)
Soto Mas, Francisco G. (4)
Urrutia-Rojas, Ximena (1)

Students (41)

Ahmad, Naveed (2)
Al-Atrash, Gheath (2)
Alvarez-Garriga, Carolina (1)
Carter, Robert, III (2)
Chen, Wilson S. (1)
Choi, Joung-II (2)
Cutler, Michael J. (1)
Das, Paromita (1)
de Berry-Carlisle, Adair (1)
Desai, Sarang Narendra (1)
Edwards, Thomas D. (1)
Fuller, John (1)
Gatson, Joshua W. (1)
Gonzales, Eric B. (1)
Guo, Zhen (1)
Haibach, Patricia (2)
Hillburn, Craig (1)
Johnson, Cassie L. (1)
Karimkhani, Valeh (1)
Keller, David M. (1)
Lambert, Wendi (2)
Lawrence, Michael C. (1)
Lee, Jae Kyung (1)
Love, Wees (1)
Lu, Dongmei (2)
Marruffo, Marco (1)
Medina, Amanda (1)
Mitra, MonaLisa (1)
Muenther Swift, Nicolette K.(1)
Perez, Evelyn J. (2)
Schafer, Grant (1)
Squires, Jeffery E. (1)
Srinivasan, Bhooma (1)
Valderas, Michelle Wright (1)
Theurer, Wesley M. (1)
Woolard, Mathew D. (2)
Yang, Shao Hua (3)
Yi, Kun D. (1)

*The number in parentheses is the total number of citations for each department and for each author. The sum of individual totals may exceed departmental totals, due to multiple authorship.

List of Journals

This is a list of the 154 journals which have published articles by UNTHSC authors in 2002. The number of articles is in parentheses.

AAO Journal (1)
Addiction (2)
Advances and Applications in Statistics (1)
Advances in Experimental Medicine and Biology (1)
AFPA Connection (1)
Alcohol (1)
Alcohol and Alcoholism (1)
Alcoholism, Clinical and Experimental Research (3)
Alternative Therapies in Health and Medicine (1)
American Anthropologist (1)
American Journal of Cardiology (1)
American Journal of Clinical Pathology (1)
American Journal of Epidemiology (1)
American Journal of Physiology. Heart and Circulatory Physiology (1)
American Journal of Physiology. Lung Cellular and Molecular Physiology (1)
American Journal of Preventive Medicine (1)
American Journal of Public Health (2)
American Journal of Respiratory and Critical Care Medicine (3)
Anales espanoles de pediatria (1)
Annals of the New York Academy of Sciences (1)
Anticancer Research (2)
Archives of Environmental Contamination and Toxicology (1)
Artificial Organs (1)
Autonomic Neuroscience (1)
Basic Research in Cardiology (2)
Biochemical and Biophysical Research Communications (2)
Biochemistry (1)
Biochimica et Biophysica Acta (1)
Bioorganic and Medicinal Chemistry (1)
Biophysical Journal (1)
Brain Research (1)
Brain Research. Molecular Brain Research (2)
Breast Cancer Research and Treatment (1)
Bulletin of Environmental Contamination and Toxicology (3)
Cardiology (1)
Chemosphere (1)
Circulation (2)
Clinical Cancer Research (1)
Clinical Genetics (1)
Cornea (1)
Current Eye Research (1)
Diabetes (2)
Disease-a-Month (1)
DO (1)
Eating Behaviors (1)
Ecological Modelling (1)
Electrophoresis (1)
Environmental Monitoring and Assessment (1)
Environmental Toxicology and Chemistry (1)
European Journal of Biochemistry (1)
European Journal of Pharmacology (1)
Evaluation and the Health Professions (1)
Exercise and Sport Sciences Reviews (1)
Experimental Biology and Medicine (Maywood, N.J.) (1)
Experimental Cell Research (1)
Experimental Eye Research (1)
Expert Opinion on Emerging Drugs (1)
Expert Opinion on Pharmacotherapy (1)
Family Medicine (1)
Free Radical Biology and Medicine (1)
Geocarto International (1)
Ground Water Monitoring & Remediation (1)
Headache (1)
Health Affairs (Millwood) (1)
Health Physics (2)
Health Searchlight (1)
Hispanic Health Care International (1)
In Vivo (2)
Infection and Immunity (1)
Infectious Disease Clinics of North America (1)
International Journal of Molecular Medicine (1)
International Journal of Obesity and Related Metabolic Disorders (1)
Investigative Ophthalmology and Visual Science (4)
JAAPA (2)
Journal for the Scientific Study of Religion (1)
Journal of Applied Physiology (4)
Journal of Bacteriology (4)
Journal of Biological Chemistry (4)
Journal of Clinical Microbiology (1)
Journal of Craniofacial Surgery (1)
Journal of Family Violence (1)
Journal of Glaucoma (1)
Journal of Health Psychology (1)

Journal of Human Lactation (1)
 Journal of Immunology (4)
 Journal of Infectious Diseases (1)
 Journal of Interpersonal Violence (2)
 Journal of Maternal-Fetal & Neonatal Medicine
 (1)
 Journal of Membrane Biology (1)
 Journal of Molecular and Cellular Cardiology (1)
 Journal of Neurobiology (1)
 Journal of Neurophysiology (1)
 Journal of Neuroscience (1)
 Journal of Occupational and Environmental
 Medicine (1)
 Journal of Ocular Pharmacology and Therapeutics
 (4)
 Journal of Pharmacy and Pharmacology (1)
 Journal of Physiology (2)
 Journal of Policy Analysis and Management (1)
 Journal of Religion and Health (1)
 Journal of the American Academy of Nurse
 Practitioners (1)
 Journal of the American Board of Family Practice
 (1)
 Journal of the American Osteopathic Association
 (11)
 Journal of the Indian Society of Agricultural
 Statistics (1)
 Journal of the Neurological Sciences (1)
 Journal of Travel Medicine (1)
 Journal of Urban Technology (1)
 Laboratory Medicine (2)
 Lancet (1)
 Life Sciences (1)
 Mathematics and Computers in Simulation (1)
 Mechanisms of Ageing and Development (1)
 Medical Teacher (1)
 Medicine and Science in Sports and Exercise (1)
 Methods in Enzymology (1)
 Military Medicine (1)
 Minnesota Medicine (1)
 Molecular and Cellular Biology (1)
 Molecular Cancer Therapeutics (1)
 Molecular Immunology (1)
 Molecular Microbiology (1)
 Molecular Vision (1)
 Molecules and Cells (1)
 Nature Cell Biology (1)
 Neurobiology of Aging (1)
 Neuroscience and Biobehavioral Reviews (1)
 News & Views (Society for Public Health
 Education) (1)
 Nippon Seirigaku Zasshi. Journal of the
 Physiological Society of Japan (1)
 Noticias de Medicos del Mundo (2)
 Nursing Economics (1)
 Oklahoma DO (1)
 Oncogene (1)
 Ophthalmology (1)
 Pain Medicine (1)
 Perfusion (1)
 Perspective on Physician Assistant Education (2)
 Photochemical & Photobiological Sciences (1)
 Preventive Medicine (1)
 Puerto Rico Health Sciences Journal (2)
 Social Marketing Quarterly (1)
 Stroke (1)
 Structural Equation Modeling (1)
 Survey of Ophthalmology (1)
 Texas D.O. (13)
 Texas Journal of Rural Health (1)
 Texas Medicine (1)
 Toxicology Mechanisms & Methods (1)
 TPHA Journal (3)
 Trends in Endocrinology & Metabolism (1)
 Vaccine (1)
 Viral Immunology (1)
 Visual Neuroscience (1)
 Waste Management (New York, N.Y.) (1)
 Water Resources Research (1)
 Wetlands (1)

Texas College of Osteopathic Medicine
★
Graduate School of Biomedical Sciences

Cell Biology and Genetics

Neeraj Agarwal, Ph.D.
Associate Professor

Agarwal N, Martin E, Krishnamoorthy R, Landers R, Wen R, Krueger S, Kapin MA, Collier RJ.
Levobetaxolol-induced up-regulation of retinal bFGF and CNTF mRNAs and preservation of retinal function against a photic-induced retinopathy. Experimental Eye Research 2002 Apr;74(4):445-53.

Chen JS, Agarwal N, Mehta K. **Multidrug-resistant MCF-7 breast cancer cells contain deficient intracellular calcium pools.** Breast Cancer Research and Treatment 2002 Feb;71(3):237-47.

Devarajan E, Sahin AA, Chen JS, Krishnamoorthy R, Agarwal N, Brun-Zinkernagel AM, Sapino A, Zhang F, Sharma D, Yang XH, Tora AD, Mehta K. **Down-regulation of caspase 3 in breast cancer: a possible mechanism for chemoresistance.** Oncogene 2002 Dec 12;21(57):8843-51.

Shamsul Ola M, Moore P, Maddox D, El-Sherbeny A, Huang W, Roon P, Agarwal N, Ganapathy V, Smith SB. **Analysis of sigma receptor (sigmaR1) expression in retinal ganglion cells cultured under hyperglycemic conditions and in diabetic mice.** Brain Research. Molecular Brain Research 2002 Nov 15;107(2):97-107.

Rajnee Agarwal
Senior Research Assistant

Wordinger RJ, Agarwal R, Talati M, Fuller J, Lambert W, Clark AF. **Expression of bone morphogenetic proteins (BMP), BMP receptors, and BMP associated proteins in human trabecular meshwork and optic nerve head cells and tissues.** Molecular Vision 2002 Jul 15;8:241-50.

Anne-Marie Brun-Zinkernagel
Research Associate

Devarajan E, Sahin AA, Chen JS, Krishnamoorthy R, Agarwal N, Brun-Zinkernagel AM, Sapino A, Zhang F, Sharma D, Yang XH, Tora AD, Mehta K. **Down-regulation of caspase 3 in breast cancer: a possible mechanism for chemoresistance.** Oncogene 2002 Dec 12;21(57):8843-51.

Jung ME, Yang SH, Brun-Zinkernagel AM, Simpkins JW. **Estradiol protects against cerebellar damage and motor deficit in ethanol-withdrawn rats.** Alcohol 2002 Feb;26(2):83-93.

Sheedlo HJ, Srinivasan B, Brun-Zinkernagel AM, Roque CH, Lambert W, Wordinger RJ, Roque RS.
Expression of p75(NTR) in photoreceptor cells of dystrophic rat retinas. Brain Research. Molecular Brain Research 2002 Jun 30;103(1-2):71-9.

Patrick R. Cammarata, Ph.D.
Professor

Cammarata PR, Schafer G, Chen SW, Guo Z, Reeves RE. **Osmoregulatory alterations in taurine uptake by cultured human and bovine lens epithelial cells.** Investigative Ophthalmology and Visual Science 2002 Feb;43(2):425-33.

Robert J. Collier, Ph.D.
Adjunct Assistant Professor

Agarwal N, Martin E, Krishnamoorthy R, Landers R, Wen R, Krueger S, Kapin MA, Collier RJ. **Levobetaxolol-induced up-regulation of retinal bFGF and CNTF mRNAs and preservation of retinal function against a photic-induced retinopathy.** Experimental Eye Research 2002 Apr;74(4):445-53.

Margaret H. Garner, Ph.D.
Associate Professor

Garner MH. **Na,K-ATPase in the nuclear envelope regulates Na⁺: K⁺ gradients in hepatocyte nuclei.** Journal of Membrane Biology 2002 May 15;187(2):97-115.

Ljubimov AV, Atilano SR, Garner MH, Maguen E, Nesburn AB, Kenney MC. **Extracellular matrix and Na⁺,K⁺-ATPase in human corneas following cataract surgery: comparison with bullous keratopathy and Fuchs' dystrophy corneas.** Cornea 2002 Jan;21(1):74-80.

Mitchell D. McCartney, Ph.D.
Adjunct Assistant Professor

Ubels JL, Aupperlee MD, Jackson RS 2nd, Van Dyken SJ, McCartney MD. **Topically applied 15-(S)-HETE stimulates mucin production by corneal epithelium.** Advances in Experimental Medicine and Biology 2002;506(Pt. A):317-21.

Andrea N. Moor, Ph.D.
Postdoctoral Research Associate

Basu A, Lu D, Sun B, Moor AN, Akkaraju GR, Huang J. **Proteolytic activation of protein kinase C-epsilon by caspase-mediated processing and transduction of antiapoptotic signals.** Journal of Biological Chemistry 2002 Nov 1;277(44):41850-6.

Lawrence X. Oakford, Ph.D.
Technical Manager of MCS

Jackson DW, Suzuki K, Oakford LX, Simecka JW, Hart ME, Romeo T. **Biofilm formation and dispersal under the influence of the global regulator CsrA of Escherichia coli.** Journal of Bacteriology 2002 Jan;184(1):290-301.

Rustin E. Reeves, Ph.D.
Assistant Professor

Cammarata PR, Schafer G, Chen SW, Guo Z, Reeves RE. **Osmoregulatory alterations in taurine uptake by**

cultured human and bovine lens epithelial cells. Investigative Ophthalmology and Visual Science 2002 Feb;43(2):425-33.

Rouel S. Roque, M.D.
Associate Professor

Sheedlo HJ, Srinivasan B, Brun-Zinkernagel AM, Roque CH, Lambert W, Wordinger RJ, Roque RS.
Expression of p75(NTR) in photoreceptor cells of dystrophic rat retinas. Brain Research. Molecular Brain Research 2002 Jun 30;103(1-2):71-9.

Harold J. Sheedlo, Ph.D.
Assistant Professor

Sheedlo HJ, Srinivasan B, Brun-Zinkernagel AM, Roque CH, Lambert W, Wordinger RJ, Roque RS.
Expression of p75(NTR) in photoreceptor cells of dystrophic rat retinas. Brain Research. Molecular Brain Research 2002 Jun 30;103(1-2):71-9.

Robert J. Wordinger, Ph.D.
Associate Professor and Acting Chair

Clark AF, Wordinger RJ. **Steroid glaucoma [Electronic].** Glaucoma World 2001 Jul;no.22.
URL: <http://www.glaucomaworld.net/english/022/e02204.html>

Prasanna G, Krishnamoorthy R, Clark AF, Wordinger RJ, Yorio T. **Human optic nerve head astrocytes as a target for endothelin-1.** Investigative Ophthalmology and Visual Science 2002 Aug;43(8):2704-13.

Sheedlo HJ, Srinivasan B, Brun-Zinkernagel AM, Roque CH, Lambert W, Wordinger RJ, Roque RS.
Expression of p75(NTR) in photoreceptor cells of dystrophic rat retinas. Brain Research. Molecular Brain Research 2002 Jun 30;103(1-2):71-9.

Wordinger RJ, Agarwal R, Talati M, Fuller J, Lambert W, Clark AF. **Expression of bone morphogenetic proteins (BMP), BMP receptors, and BMP associated proteins in human trabecular meshwork and optic nerve head cells and tissues.** Molecular Vision 2002 Jul 15;8:241-50.

Education

Kathy Broyles, M.L.S.
Thesaurus Editor

Johnson LF, Broyles K, Broyles M, DeLozier K, Halligan A, Kimbrough Y. **Subject index to volume 101.** Journal of the American Osteopathic Association 2002 Mar;102(3):161-89.

Michelle Broyles
Data Entry Clerk

Johnson LF, Broyles K, Broyles M, DeLozier K, Halligan A, Kimbrough Y. **Subject index to volume 101.** Journal of the American Osteopathic Association 2002 Mar;102(3):161-89.

Daniel E. Burgard, M.L.S.
Instructor

Burgard, DE. **Journals of the century in psychology.** In: Stankus, T, editor. Journals of the century. New York: Haworth Information Press; 2002. pp. 29-44.

Kim DeLozier
Library Assistant

Johnson LF, Broyles K, Broyles M, DeLozier K, Halligan A, Kimbrough Y. **Subject index to volume 101.** Journal of the American Osteopathic Association 2002 Mar;102(3):161-89.

Lynn F. Johnson, M.S.I.S., C.A.S.
Instructor

Johnson LF, Broyles K, Broyles M, DeLozier K, Halligan A, Kimbrough Y. **Subject index to volume 101.** Journal of the American Osteopathic Association 2002 Mar;102(3):161-89.

Jay H. Shores, Ph.D.
Associate Professor

Gamber RG, Shores JH, Russo DP, Jimenez C, Rubin BR. **Osteopathic manipulative treatment in conjunction with medication relieves pain associated with fibromyalgia syndrome: results of a randomized clinical pilot project.** Journal of the American Osteopathic Association 2002 Jun;102(6):321-5.

Knebl JA, Shores JH, Gamber RG, Gray WT, Herron KM. **Improving functional ability in the elderly via the Spencer technique, an osteopathic manipulative treatment: a randomized, controlled trial.** Journal of the American Osteopathic Association 2002 Jul;102(7):387-96.

Family Medicine

Barbara D. Adams, M.S.A.
Instructor

Adams BD, Casper D, Bowling JR. **Introducing rural lifestyle into a family medicine curriculum.** Texas Journal of Rural Health 2002;20(3):16-25.

Pagels P, Adams BD. **Borders project transforms future physicians, physician assistants.** D.O. 2002 Jul;43(7):14-6.

John R. Bowling, D.O.
Associate Professor

Adams BD, Casper D, Bowling JR. **Introducing rural lifestyle into a family medicine curriculum.** Texas Journal of Rural Health 2002;20(3):16-25.

Clifton A. Cage, D.O.
Assistant Professor

Cage CA, Lewis D. **Why refer to clinical trials?** Texas D.O. 2002 May;59(5):13.

Sharon E. Clark, D.O., M.P.H.
Assistant Professor

Clark SE, Rene AA, Theurer WM, Marshall MA. **Association of body mass index and health status in firefighters.** Journal of Occupational and Environmental Medicine 2002 Oct;44(10):940-6.

Lorich MF, Marshall MA, Walker W 4th, Clark SE, Rene AA, Ivanovskis G. **Line-of-duty injury or illness in an Air National Guard unit.** Military Medicine 2002 Sep;167(9):732-5.

Samuel T. Coleridge, D.O.
Professor and Chair

Licciardone JC, Brittain PD, Coleridge ST. **Health status and satisfaction of patients receiving ambulatory care at osteopathic training clinics.** Journal of the American Osteopathic Association 2002 Apr;192(4):219-23.

Smith-Barbaro PA, Coleridge ST. **In response. Where FM academicians are really publishing: the experiences of one FM department [Letter].** Family Medicine 2002 Oct;34(9):638-9; discussion 639.

Suzanne B. Davis
Administrative Specialist

Davis SB. **Fish! A remarkable way to boost morale and improve results, by Stephen C. Lundin [Book Review].** AFPA Connection 2001 Winter;16(4):13.

Davis SB. **Leaving the office behind (Yes, there is life after 5:00. Here's the book that shows you how to enjoy it.) by Dr. Barbara Mackoff [Book Review].** AFPA Connection 2002 Summer;17(2):10-1.

Susan F. Franks, Ph.D.
Assistant Professor

Hall JR, Franks SF. **Coping with terrorism.** Texas D.O. 2002 Feb;59(8-10):11-2.

Hoke CN, Franks SF. **Work site, physician's office, or medical university clinic: the effect of setting on success in a multidisciplinary weight-loss program.** Eating Behaviors 2002 Spring;3(1):93-100.

McGill JC, Hall JR, Franks SF. **Behavioral treatments for back pain.** Texas D.O. 2002 Apr;49(4):10-1.

Kimberly G. Fulda, M.P.H.
Research Instructor

Fulda KG, Licciardone JC, Rene AA, Blakley S. **A study of hepatitis A seropositivity in Dallas County, Texas, 1998 through 1999.** Texas Medicine 2002 Dec;98(12):50-5.

Licciardone JC, Fulda KG, Smith-Barbaro PA. **Rating interest in clinical research among osteopathic**

medical students [Letter]. Journal of the American Osteopathic Association 2002 Aug;102(9):410-2.

John C. Licciardone, D.O.
Professor

Fulda KG, Licciardone JC, Rene AA, Blakley S. **A study of hepatitis A seropositivity in Dallas County, Texas, 1998 through 1999.** Texas Medicine 2002 Dec;98(12):50-5.

Licciardone JC. **Access patterns of a clinic-based health information web site for international travelers.** Journal of Travel Medicine 2002 Nov;9(6):315-7.

Licciardone JC. **Need for objective measures to prove clinical outcome : response [Letter].** Journal of the American Osteopathic Association 2002 Mar;102(3):120-1.

Licciardone JC. **Osteopathic manipulative treatment for low back pain.** Texas D.O. 2002 Apr;49(4):12-4.

Licciardone JC. **Osteosurv: a new tool for osteopathic health services and policy research.** Oklahoma D.O. 2002 Feb;66(10):28-30.

Licciardone JC, Brittain PD, Coleridge ST. **Health status and satisfaction of patients receiving ambulatory care at osteopathic training clinics.** Journal of the American Osteopathic Association 2002 Apr;192(4):219-23.

Licciardone JC, Fulda KG, Smith-Barbaro PA. **Rating interest in clinical research among osteopathic medical students [Letter].** Journal of the American Osteopathic Association 2002 Aug;102(9):410-2.

Licciardone JC, Gamber RG, Cardarelli K. **Patient satisfaction and clinical outcomes associated with osteopathic manipulative treatment.** Journal of the American Osteopathic Association 2002 Jan;102(1):13-20.

Licciardone JC, Gamber RG, Russo DP. **Quality of life in referred patients presenting to a specialty clinic for osteopathic manipulative treatment.** Journal of the American Osteopathic Association 2002 Mar;102(3):151-5.

Muriel A. Marshall, D.O., Dr.P.H.
Associate Professor

Clark SE, Rene AA, Theurer WM, Marshall MA. **Association of body mass index and health status in firefighters.** Journal of Occupational and Environmental Medicine 2002 Oct;44(10):940-6.

Lorich MF, Marshall MA, Walker W 4th, Clark SE, Rene AA, Ivanovskis G. **Line-of-duty injury or illness in an Air National Guard unit.** Military Medicine 2002 Sep;167(9):732-5.

Patti Pagels, PA-C
Assistant Professor

Pagels P, Adams BD. **Borders project transforms future physicians, physician assistants.** D.O. 2002 Jul;43(7):14-6.

Mark A. Sanders, D.O.
Assistant Professor

Sanders MA. **Case report: multiple myeloma.** Texas D.O. 2002 May;59(5):14-6.

Peggy A. Smith-Barbaro, Ph.D.
Research Assistant Professor

Licciardone JC, Fulda KG, Smith-Barbaro PA. **Rating interest in clinical research among osteopathic medical students [Letter].** Journal of the American Osteopathic Association 2002 Aug;102(9):410-2.

Smith-Barbaro PA, Coleridge ST. **In response. Where FM academicians are really publishing: the experiences of one FM department [Letter].** Family Medicine 2002 Oct;34(9):638-9; discussion 639.

Alan R. Stockard, D.O.
Associate Professor

Stockard AR. **Preparticipation physical evaluation of athletes - new and improved.** Texas D.O. 2002 Apr;49(4):21.

Carolyn Telford, PA-C, M.P.A.S.
Instructor

Telford C. **Understanding the problem of urinary incontinence.** JAAPA 2002 Jan;15(1):45-50.

Telford C, Edwards TD, Ciper DJ. **Performance in physical examination skills course as a predictor of students' risk for attrition.** Perspective on Physician Assistant Education 2002 Summer/Autumn;13(2):87-91.

Information Technology Services

Cleatus J. Wallis, Ph.D.
Manager of Web Services and MSRDP Support

Gatch MB, Jung ME, Wallis CJ, Lal H. **Effects of GABA(A) compounds on mCPP drug discrimination in rats.** Life Sciences 2002 Oct 18;71(22):2657-65.

Integrative Physiology

Joan F. Carroll, Ph.D.
Assistant Professor

Carroll JF, Kyser CK. **Exercise training in obesity lowers blood pressure independent of weight change.** Medicine and Science in Sports and Exercise 2002 Apr;34(4):596-601.

Carroll JF, Kyser CK, Martin MM. **beta-Adrenoceptor density and adenylyl cyclase activity in obese rabbit hearts.** International Journal of Obesity and Related Metabolic Disorders 2002 May;26(5):627-32.

S. Dan Dimitrijevic, Ph.D.
Research Associate Professor

Olivencia-Yurvati AH, Wallace WE, Wallace N, Dimitrijevic SD, Knust JK, Haas L, Raven PB.
Intraoperative treatment strategy to reduce the incidence of postcardiopulmonary bypass atrial fibrillation. Perfusion 2002 May;17 Suppl:35-9.

H. Fred Downey, Ph.D.
Professor

Bian X, Downey HF. **Enhanced intra-aortic balloon pump: markedly improved systemic hemodynamics and cardiac function in canines with severe, acute left ventricular failure.** Artificial Organs 2002 Aug;26(8):727-33.

Setty S, Tune JD, Downey HF. **Nitric oxide modulates right ventricular flow and oxygen consumption during norepinephrine infusion.** American Journal of Physiology. Heart and Circulatory Physiology 2002 Feb;282(2):H696-703.

Tune JD, Yeh C, Setty S, Downey HF. **ATP-dependent K(+) channels contribute to local metabolic coronary vasodilation in experimental diabetes.** Diabetes 2002 Apr;51(4):1201-7.

Tune JD, Yeh C, Setty S, Zong P, Downey HF. **Coronary blood flow control is impaired at rest and during exercise in conscious diabetic dogs.** Basic Research in Cardiology 2002 May;97(3):248-57.

Zong P, Tune JD, Setty S, Downey HF. **Endogenous nitric oxide regulates right coronary blood flow during acute pulmonary hypertension in conscious dogs.** Basic Research in Cardiology 2002 Sep;97(5):392-8.

Cheryl K. Kyser, Ph.D.
Research Associate

Carroll JF, Kyser CK. **Exercise training in obesity lowers blood pressure independent of weight change.** Medicine and Science in Sports and Exercise 2002 Apr;34(4):596-601.

Carroll JF, Kyser CK, Martin MM. **beta-Adrenoceptor density and adenylyl cyclase activity in obese rabbit hearts.** International Journal of Obesity and Related Metabolic Disorders 2002 May;26(5):627-32.

Robert T. Mallet, Ph.D.
Associate Professor

Mallet RT, Squires JE, Bhatia S, Sun J. **Pyruvate restores contractile function and antioxidant defenses of hydrogen peroxide-challenged myocardium.** Journal of Molecular and Cellular Cardiology 2002 Sep;34(9):1173-84.

William J. Martin II, M.D.
Adjunct Professor

He YH, Xu Y, Kobune M, Wu M, Kelley MR, Martin WJ II. ***Escherichia coli* FPG and human OGG1 reduce DNA damage and cytotoxicity by BCNU in human lung cells.** American Journal of Physiology. Lung Cellular and Molecular Physiology 2002 Jan;282(1):L50-5.

Pasula R, Weaver T, Martinez MA, Martin WJ II. **Morphologic detection and functional assessment of reconstituted normal alveolar macrophages in the lungs of SCID mice.** Journal of Immunology 2002 Oct 15;169(8):4504-10.

Pasula R, Wisniowski P, Martin WJ II. **Fibronectin facilitates *Mycobacterium tuberculosis* attachment to murine alveolar macrophages.** Infection and Immunity 2002 Mar;70(3):1287-92.

Wu M, He YH, Kobune M, Xu Y, Kelley MR, Martin WJ II. **Protection of human lung cells against hyperoxia using the DNA base excision repair genes hOgg1 and Fpg.** American Journal of Respiratory and Critical Care Medicine 2002 Jul 15;166(2):192-9.

Wu M, Stockley PG, Martin WJ II. **An improved Western blotting technique effectively reduces background.** Electrophoresis 2002 Aug;23(15):2373-6.

Shigehiko Ogoh, Ph.D.
Research Instructor

Ogoh S, Fadel PJ, Monteiro F, Wasmund WE, Raven PB. **Haemodynamic changes during neck pressure and suction in seated and supine positions.** Journal of Physiology 2002 Apr 15;540(Pt 2):707-16.

Ogoh S, Hirai T, Nohara R, Taguchi S. **[Adaptation in properties of skeletal muscle to coronary artery occlusion/reperfusion in rats].** Nippon Seirigaku Zasshi. Journal of the Physiological Society of Japan 2002;64(10):225-36.

Ogoh S, Wasmund WE, Keller DM, Olivencia-Yurvati AH, Gallagher KM, Mitchell JH, Raven PB. **Role of central command in carotid baroreflex resetting in humans during static exercise.** Journal of Physiology 2002 Aug 15;543(pt. 1):349-64.

Peter B. Raven, Ph.D.
Adjunct Professor

Ogoh S, Fadel PJ, Monteiro F, Wasmund WE, Raven PB. **Haemodynamic changes during neck pressure and suction in seated and supine positions.** Journal of Physiology 2002 Apr 15;540(Pt 2):707-16.

Ogoh S, Wasmund WE, Keller DM, Olivencia-Yurvati AH, Gallagher KM, Mitchell JH, Raven PB. **Role of central command in carotid baroreflex resetting in humans during static exercise.** Journal of Physiology 2002 Aug 15;543(pt. 1):349-64.

Olivencia-Yurvati AH, Wallace WE, Wallace N, Dimitrijevic SD, Knust JK, Haas L, Raven PB. **Intraoperative treatment strategy to reduce the incidence of postcardiopulmonary bypass atrial fibrillation.** Perfusion 2002 May;17 Suppl:35-9.

Purdy Lloyd KL, Wasmund WE, Smith L, Raven PB. **Clinical effects of a dietary antioxidant silicate supplement, Microhydrin®, on cardiovascular responses to exercise.** Journal of Medicinal Food 2001 Fall;4(3):151-9.

Raven PB, Fadel PJ, Smith SA. **The influence of central command on baroreflex resetting during exercise.** Exercise and Sport Sciences Reviews 2002 Jan;30(1):39-44.

Williamson JW, McColl R, Mathews D, Mitchell JH, Raven PB, Morgan WP. **Brain activation by central command during actual and imagined handgrip under hypnosis.** Journal of Applied Physiology 2002 Mar;92(3):1317-24.

Srinath Setty, Ph.D.

Postdoctoral Research Assistant

Setty S, Tune JD, Downey HF. **Nitric oxide modulates right ventricular flow and oxygen consumption during norepinephrine infusion.** American Journal of Physiology. Heart and Circulatory Physiology 2002 Feb;282(2):H696-703.

Tune JD, Yeh C, Setty S, Downey HF. **ATP-dependent K(+) channels contribute to local metabolic coronary vasodilation in experimental diabetes.** Diabetes 2002 Apr;51(4):1201-7.

Tune JD, Yeh C, Setty S, Zong P, Downey HF. **Coronary blood flow control is impaired at rest and during exercise in conscious diabetic dogs.** Basic Research in Cardiology 2002 May;97(3):248-57.

Zong P, Tune JD, Setty S, Downey HF. **Endogenous nitric oxide regulates right coronary blood flow during acute pulmonary hypertension in conscious dogs.** Basic Research in Cardiology 2002 Sep;97(5):392-8.

Michael L. Smith, Ph.D.

Associate Professor and Acting Chair

Carter RIII, Wilson TE, Watenpaugh DE, Smith ML, Crandall CG. **Effects of mode of exercise recovery on thermoregulatory and cardiovascular responses.** Journal of Applied Physiology 2002 Dec;93(6):1918-24.

Cutler MJ, Hamdan AL, Hamdan MH, Ramaswamy K, Smith ML. **Sleep apnea: from the nose to the heart.** Journal of the American Board of Family Practice 2002 Mar-Apr;15(2):128-41.

Hamdan MH, Barbera S, Kowal RC, Page RL, Ramaswamy K, Joglar JA, Karimkhani V, Smith ML. **Effects of resynchronization therapy on sympathetic activity in patients with depressed ejection fraction and intraventricular conduction delay due to ischemic or idiopathic dilated cardiomyopathy.** American Journal of Cardiology 2002 May 1;89(9):1047-51.

Takata TS, Wasmund SL, Smith ML, Li JM, Joglar JA, Banks K, Kowal RC, Page RL, Hamdan MH. **Serotonin reuptake inhibitor (Paxil) does not prevent the vasovagal reaction associated with carotid sinus massage and/or lower body negative pressure in healthy volunteers.** Circulation 2002 Sep 17;106(12):1500-4.

Wasmund WE, Westerholm EC, Watenpaugh DE, Wasmund SL, Smith ML. **Interactive effects of mental and physical stress on cardiovascular control.** Journal of Applied Physiology 2002 May;92(5):1828-34.

Watenpaugh DE, Cothron AV, Wasmund SL, Wasmund WE, Carter R III, Muentner NK, Smith ML. **Do vestibular otolith organs participate in human orthostatic blood pressure control?** Autonomic Neuroscience 2002 Sep 30;100(1-2):77-83.

Jie Sun
Senior Research Assistant

Mallet RT, Squires JE, Bhatia S, Sun J. **Pyruvate restores contractile function and antioxidant defenses of hydrogen peroxide-challenged myocardium.** Journal of Molecular and Cellular Cardiology 2002 Sep;34(9):1173-84.

Johnathan D. Tune, Ph.D.
Assistant Professor

Setty S, Tune JD, Downey HF. **Nitric oxide modulates right ventricular flow and oxygen consumption during norepinephrine infusion.** American Journal of Physiology. Heart and Circulatory Physiology 2002 Feb;282(2):H696-703.

Tune JD, Richmond KN, Gorman MW, Feigl EO. **Control of coronary blood flow during exercise.** Experimental Biology and Medicine (Maywood, N.J.) 2002 Apr;227(4):238-50.

Tune JD, Yeh C, Setty S, Downey HF. **ATP-dependent K(+) channels contribute to local metabolic coronary vasodilation in experimental diabetes.** Diabetes 2002 Apr;51(4):1201-7.

Tune JD, Yeh C, Setty S, Zong P, Downey HF. **Coronary blood flow control is impaired at rest and during exercise in conscious diabetic dogs.** Basic Research in Cardiology 2002 May;97(3):248-57.

Zong P, Tune JD, Setty S, Downey HF. **Endogenous nitric oxide regulates right coronary blood flow during acute pulmonary hypertension in conscious dogs.** Basic Research in Cardiology 2002 Sep;97(5):392-8.

Wendy E. Wasmund
Research Associate

Ogoh S, Fadel PJ, Monteiro F, Wasmund WE, Raven PB. **Haemodynamic changes during neck pressure and suction in seated and supine positions.** Journal of Physiology 2002 Apr 15;540(Pt 2):707-16.

Ogoh S, Wasmund WE, Keller DM, Olivencia-Yurvati AH, Gallagher KM, Mitchell JH, Raven PB. **Role of central command in carotid baroreflex resetting in humans during static exercise.** Journal of Physiology 2002 Aug 15;543(pt. 1):349-64.

Purdy Lloyd KL, Wasmund WE, Smith L, Raven PB. **Clinical effects of a dietary antioxidant silicate supplement, Microhydrin®, on cardiovascular responses to exercise.** Journal of Medicinal Food 2001 Fall;4(3):151-9.

Wasmund WE, Westerholm EC, Watenpaugh DE, Wasmund SL, Smith ML. **Interactive effects of mental and physical stress on cardiovascular control.** Journal of Applied Physiology 2002 May;92(5):1828-34.

Watenpaugh DE, Cothron AV, Wasmund SL, Wasmund WE, Carter R III, Muentner NK, Smith ML. **Do vestibular otolith organs participate in human orthostatic blood pressure control?** Autonomic Neuroscience 2002 Sep 30;100(1-2):77-83.

Pu Zong, M.D., Ph.D.
Postdoctoral Research Associate

Tune JD, Yeh C, Setty S, Zong P, Downey HF. **Coronary blood flow control is impaired at rest and during**

exercise in conscious diabetic dogs. Basic Research in Cardiology 2002 May;97(3):248-57.

Zong P, Tune JD, Setty S, Downey HF. **Endogenous nitric oxide regulates right coronary blood flow during acute pulmonary hypertension in conscious dogs.** Basic Research in Cardiology 2002 Sep;97(5):392-8.

Internal Medicine

Ronald R. Blanck, D.O.
Professor and UNTHSC President

Blanck RR. **Bioterrorism: a path to health promotion and prevention.** Health Searchlight 2002 Spring;2(2):1.

Blanck RR. **The history of immunization in the U.S. armed forces.** Minnesota Medicine 2002 Feb;85(2):14-7.

Blanck RR. **Weapons of mass destruction and bioterrorism.** Texas D.O. 2002 Feb;59(2):6-8.

Michael B. Clearfield, D.O.
Professor and Associate Dean for Clinical Research

Clearfield MB. **Adult Treatment Panel III: do we really need another set of cholesterol guidelines?** Journal of the American Osteopathic Association 2002 May;102(5 Suppl 1):S6-11.

Clearfield MB. **Statins: balancing benefits, efficacy and safety.** Expert Opinion on Pharmacotherapy 2002 May;3(5):469-77.

Clearfield MB, Weis SE, Willis JM, Vasenius KA, McConathy WJ. **Labiality of serum low-density lipoprotein cholesterol levels during screening in subgroup of Air Force/Texas Coronary Atherosclerosis Prevention Study (AFCAPS/TexCAPS) cohort.** Journal of the American Osteopathic Association 2002 Jul;102(7):377-84.

Ridker PM, Shih J, Cook TJ, Clearfield MB, Downs JR, Pradhan AD, Weis SE, Gotto AM Jr. **Plasma homocysteine concentration, statin therapy, and the risk of first acute coronary events.** Circulation 2002 Apr 16;105(15):1776-9.

James R. Hall, Ph.D.
Associate Professor

Hall JR, Franks SF. **Coping with terrorism.** Texas D.O. 2002 Feb;59(8-10):11-2.

McGill JC, Hall JR, Franks SF. **Behavioral treatments for back pain.** Texas D.O. 2002 Apr;49(4):10-1.

Cynthia Jimenez, R.N.
Clinical Research Coordinator

Gamber RG, Shores JH, Russo DP, Jimenez C, Rubin BR. **Osteopathic manipulative treatment in**

conjunction with medication relieves pain associated with fibromyalgia syndrome: results of a randomized clinical pilot project. Journal of the American Osteopathic Association 2002 Jun;102(6):321-5.

Janice A. Knebl, D.O.
Associate Professor

Knebl JA, Shores JH, Gamber RG, Gray WT, Herron KM. **Improving functional ability in the elderly via the Spencer technique, an osteopathic manipulative treatment: a randomized, controlled trial.** Journal of the American Osteopathic Association 2002 Jul;102(7):387-96.

Walter J. McConathy, Ph.D.
Associate Professor

Clearfield MB, Weis SE, Willis JM, Vasenius KA, McConathy WJ. **Lability of serum low-density lipoprotein cholesterol levels during screening in subgroup of Air Force/Texas Coronary Atherosclerosis Prevention Study (AFCAPS/TexCAPS) cohort.** Journal of the American Osteopathic Association 2002 Jul;102(7):377-84.

Dickerman RD, McConathy WJ, Pearl NA, Stevens QE, Cohen A, Schneider SJ. **Pediatric cranial fixation: a survey of pediatric neurosurgeons.** Journal of Craniofacial Surgery 2002 Nov;13(6):769-71.

Lacko AG, Nair M, Paranjape S, Johnso S, McConathy WJ. **High density lipoprotein complexes as delivery vehicles for anticancer drugs.** Anticancer Research 2002 Jul-Aug;22(4):2045-9.

Lane DM, McConathy WJ, McCaffree MA, Hall M. **Cord serum lipid and apolipoprotein levels in preterm infants with the neonatal respiratory distress syndrome.** Journal of Maternal-Fetal & Neonatal Medicine 2002 Feb;11(2):118-25.

Stevens QE, Dickerman RD, McConathy WJ, Schaller FA. **Aortic and mitral valve thickening with concentric left ventricular hypertrophy in an elite bodybuilder: a biochemical and/or physiological adaptation?** Cardiology 2002;98(3):159-61.

Sulabha Paranjape
Research Associate

Lacko AG, Nair M, Paranjape S, Johnso S, McConathy WJ. **High density lipoprotein complexes as delivery vehicles for anticancer drugs.** Anticancer Research 2002 Jul-Aug;22(4):2045-9.

Janice M. Pogoda, Ph.D.
Clinical Assistant Professor

Binder WJ, Brin MF, Blitzer A, Pogoda JM. **Botulinum toxin type A (BOTOX) for treatment of migraine.** Disease-a-Month 2002 May;48(5):323-35.

Pogoda JM, Preston-Martin S. **The potential impact of incomplete radiography histories in epidemiologic studies that rely on prepaid health plan records.** Health Physics 2002 Oct;83(4):567-70.

Pogoda JM, Preston-Martin S. **Radiation exposure from diagnostic imaging: agreement between self-report and medical records.** Health Physics 2002 Dec;83(6):907-17.

Pogoda JM, Preston-Martin S, Nichols PW, Ross RK. **Smoking and risk of acute myeloid leukemia: results from a Los Angeles County case-control study.** American Journal of Epidemiology 2002 Mar 15;155(6):546-53.

Preston-Martin S, Kirstein LM, Pogoda JM, Rimer B, Melnick S, Masri-Lavine L, Silver S, Hessol N, French AL, Feldman J, Sacks HS, Deely M, Levine AM. **Use of mammographic screening by HIV-infected women in the Women's Interagency HIV Study (WIHS).** Preventive Medicine 2002 Mar;34(3):386-92.

Weis SE, Pogoda JM, Yang Z, Cave M D, Wallace C, Kelley M, Barnes P F. **Transmission dynamics of tuberculosis in Tarrant County, Texas.** American Journal of Respiratory and Critical Care Medicine 2002 Jul 1;166(1):36-42.

Bernard R. Rubin, D.O.
Professor

Gamber RG, Shores JH, Russo DP, Jimenez C, Rubin BR. **Osteopathic manipulative treatment in conjunction with medication relieves pain associated with fibromyalgia syndrome: results of a randomized clinical pilot project.** Journal of the American Osteopathic Association 2002 Jun;102(6):321-5.

Frederick A. Schaller, D.O.
Associate Professor

Stevens QE, Dickerman RD, McConathy WJ, Schaller FA. **Aortic and mitral valve thickening with concentric left ventricular hypertrophy in an elite bodybuilder: a biochemical and/or physiological adaptation?** Cardiology 2002;98(3):159-61.

Keith A. Vasenius, D.O.
Assistant Professor

Clearfield MB, Weis SE, Willis JM, Vasenius KA, McConathy WJ. **Lability of serum low-density lipoprotein cholesterol levels during screening in subgroup of Air Force/Texas Coronary Atherosclerosis Prevention Study (AFCAPS/TexCAPS) cohort.** Journal of the American Osteopathic Association 2002 Jul;102(7):377-84.

Stephen E. Weis, D.O.
Professor

Benator D, Bhattacharya M, Bozeman L, Burman W, Cantazaro A, Chaisson R, Gordin F, Horsburgh CR, Horton J, Khan A, Lahart C, Metchock B, Pachucki C, Stanton L, Vernon A, Villarino ME, Wang YC, Weiner M, Weis SE. **Rifapentine and isoniazid once a week versus rifampicin and isoniazid twice a week for treatment of drug-susceptible pulmonary tuberculosis in HIV-negative patients: a randomised clinical trial.** Lancet 2002 Aug 17;360(9332):528-34.

Clearfield MB, Weis SE, Willis JM, Vasenius KA, McConathy WJ. **Lability of serum low-density lipoprotein cholesterol levels during screening in subgroup of Air Force/Texas Coronary Atherosclerosis Prevention Study (AFCAPS/TexCAPS) cohort.** Journal of the American Osteopathic Association 2002 Jul;102(7):377-84.

Moonan PK, Quitugua TN, Cox RA, Weis SE. **Associate investigations: detection of tuberculosis infections in children resulting in discovery of undiagnosed tuberculosis in adults.** Journal of the American

Osteopathic Association 2002 Jul;102(7):397-400.

Quitugua TN, Seaworth BJ, Weis SE, Taylor JP, Gillette JS, Rosas II, Jost Jr KC Jr, Magee DM, Cox RA. **Transmission of drug-resistant tuberculosis in Texas and Mexico.** Journal of Clinical Microbiology 2002 Aug;40(8):2716-24.

Ridker PM, Shih J, Cook TJ, Clearfield MB, Downs JR, Pradhan AD, Weis SE, Gotto AM Jr. **Plasma homocysteine concentration, statin therapy, and the risk of first acute coronary events.** Circulation 2002 Apr 16;105(15):1776-9.

Samten B, Ghosh P, Yi AK, Weis SE, Lakey DL, Gonsky R, Pendurthi U, Wize B, Zhang Y, Zhang M, Gong J, Fernandez M, Safi H, Vankayalapati R, Young HA, Barnes PF. **Reduced expression of nuclear cyclic adenosine 5'-monophosphate response element-binding proteins and IFN-gamma promoter function in disease due to an intracellular pathogen.** Journal of Immunology 2002 Apr 1;168(7):3520-6.

Vankayalapati R, Wize B, Weis SE, Safi H, Lakey DL, Mandelboim O, Samten B, Porgador A, Barnes PF. **The Nkp46 receptor contributes to NK cell lysis of mononuclear phagocytes infected with an intracellular bacterium.** Journal of Immunology 2002 Apr 1;168(7):3451-7.

Weis SE. **Contact investigations: how do they need to be designed for the 21st century?** American Journal of Respiratory and Critical Care Medicine 2002 Oct 15;166(8):1016-7.

Weis SE, Burgess G. **Tuberculosis control in a border state. Treatment of the foreign-born.** Infectious Disease Clinics of North America 2002 Mar;16(1):59-71.

Weis SE, Pogoda JM, Yang Z, Cave M D, Wallace C, Kelley M, Barnes P F. **Transmission dynamics of tuberculosis in Tarrant County, Texas.** American Journal of Respiratory and Critical Care Medicine 2002 Jul 1;166(1):36-42.

John M. Willis, D.O.
Assistant Professor

Clearfield MB, Weis SE, Willis JM, Vasenius KA, McConathy WJ. **Labiality of serum low-density lipoprotein cholesterol levels during screening in subgroup of Air Force/Texas Coronary Atherosclerosis Prevention Study (AFCAPS/TexCAPS) cohort.** Journal of the American Osteopathic Association 2002 Jul;102(7):377-84.

Manipulative Medicine

Brooks M. Blake, D.O.
Resident

Blake BM. **Somatic dysfunction in low back pain.** Texas D.O. 2002 Apr;49(4):14-6.

Russell G. Gamber, D.O.
Associate Professor

Gamber RG, Shores JH, Russo DP, Jimenez C, Rubin BR. **Osteopathic manipulative treatment in conjunction with medication relieves pain associated with fibromyalgia syndrome: results of a**

randomized clinical pilot project. Journal of the American Osteopathic Association 2002 Jun;102(6):321-5.

Knebl JA, Shores JH, Gamber RG, Gray WT, Herron KM. **Improving functional ability in the elderly via the Spencer technique, an osteopathic manipulative treatment: a randomized, controlled trial.** Journal of the American Osteopathic Association 2002 Jul;102(7):387-96.

Licciardone JC, Gamber RG, Cardarelli K. **Patient satisfaction and clinical outcomes associated with osteopathic manipulative treatment.** Journal of the American Osteopathic Association 2002 Jan;102(1):13-20.

Licciardone JC, Gamber RG, Russo DP. **Quality of life in referred patients presenting to a specialty clinic for osteopathic manipulative treatment.** Journal of the American Osteopathic Association 2002 Mar;102(3):151-5.

Eric E. Gish, D.O.
Assistant Professor

Gish EE, McGill JC. **Current issues in the treatment of back pain.** Texas D.O. 2002 Apr;49(4):6-9.

Jerry C. McGill, Ph.D.
Associate Professor

Gish EE, McGill JC. **Current issues in the treatment of back pain.** Texas D.O. 2002 Apr;49(4):6-9.

McGill JC, Hall JR, Franks SF. **Behavioral treatments for back pain.** Texas D.O. 2002 Apr;49(4):10-1.

Scott T. Stoll, D.O., Ph.D.
Associate Professor and Chair

Baldovsky MD, Binkley GW, Stoll ST. **The OxyContin controversy.** Texas D.O. 2002 Apr;49(4):17-8.

Mitra M, Stoll ST. **Post-traumatic headache of cervical origin.** AAO Journal 2002 Fall;12(3):38-41.

Molecular Biology and Immunology

Irina S. Akopova, Ph.D.
Postdoctoral Research Associate

Borejdo J, Ushakov DS, Akopova IS. **Regulatory and essential light chains of myosin rotate equally during contraction of skeletal muscle.** Biophysical Journal 2002 Jun;82(6):3150-9.

Oleg A. Andreev, Ph.D.
Research Assistant Professor

Andreev OA, Reshetnyak YK, Goldfarb RH. **Evidence of inter- and intra-molecular crosslinking of tyrosine residues of calmodulin induced by photo-activation of ruthenium(II).** Photochemical &

Photobiological Sciences 2002 Oct;1(10):834-6.

Reshetnyak YK, Andreev OA. **The interdomain motions in myosin subfragment 1.** Biophysical Chemistry 2001 Dec 11;94(1-2):41-6.

Alakananda Basu, Ph.D.
Associate Professor

Basu A, Johnson DE, Woolard MD. **Potential of tumor necrosis factor-alpha-induced cell death by rottlerin through a cytochrome-C-independent pathway.** Experimental Cell Research 2002 Aug 15;278(2):209-14.

Basu A, Lu D, Sun B, Moor AN, Akkaraju GR, Huang J. **Proteolytic activation of protein kinase C-epsilon by caspase-mediated processing and transduction of antiapoptotic signals.** Journal of Biological Chemistry 2002 Nov 1;277(44):41850-6.

Basu A, Miura A. **Differential regulation of extrinsic and intrinsic cell death pathways by protein kinase C.** International Journal of Molecular Medicine 2002 Nov;10(5):541-5.

Johnson CL, Lu D, Huang J, Basu A. **Regulation of p53 stabilization by DNA damage and protein kinase C.** Molecular Cancer Therapeutics 2002 Aug;1(10):861-7.

Harshika Bhatt, Ph.D.
Research Assistant Professor

Lawrence MC, Bhatt H, Easom RA. **NFAT regulated insulin gene promoter activity in response to synergistic pathways induced by glucose and glucagon-like peptide-1.** Diabetes 2002 Mar;51(3):691-8.

Julian Borejdo, Ph.D.
Professor

Borejdo J, Ushakov DS, Akopova IS. **Regulatory and essential light chains of myosin rotate equally during contraction of skeletal muscle.** Biophysical Journal 2002 Jun;82(6):3150-9.

Samuel S. Chuang, Ph.D.
Research Assistant Professor

Kumaresan PR, Lai W, Chuang SS, Bennett M, Mathew PA. **CS1, a novel member of the CD2 family, is homophilic and regulates NK cell function.** Molecular Immunology 2002 Sep 15;39(1-2):1-8.

Abbot F. Clark, Ph.D.
Adjunct Professor

Clark AF, Wordinger RJ. **Steroid glaucoma [Electronic].** Glaucoma World 2001 Jul;no.22.
URL: <http://www.glaucomaworld.net/english/022/e02204.html>

Pang IH, Clark AF. **Advances in glaucoma therapeutics.** Expert Opinion on Emerging Drugs 2002 May;7(1):141-63.

Prasanna G, Krishnamoorthy R, Clark AF, Wordinger RJ, Yorio T. **Human optic nerve head astrocytes as a target for endothelin-1.** Investigative Ophthalmology and Visual Science 2002 Aug;43(8):2704-13.

Shepard AR, Jacobson N, Fingert JH, Stone EM, Sheffield VC, Clark AF. **Delayed secondary glucocorticoid responsiveness of MYOC in human trabecular meshwork cells.** Investigative Ophthalmology and Visual Science 2001 Dec;42(13):3173-81.

Wordinger RJ, Agarwal R, Talati M, Fuller J, Lambert W, Clark AF. **Expression of bone morphogenetic proteins (BMP), BMP receptors, and BMP associated proteins in human trabecular meshwork and optic nerve head cells and tissues.** Molecular Vision 2002 Jul 15;8:241-50.

Craig C. Conrad, Ph.D.
Adjunct Assistant Professor

Choi JI, Conrad CC, Malakowsky CA, Talent JM, Yuan CS, Gracy RW. **Flavones from *Scutellaria baicalensis* Georgi attenuate apoptosis and protein oxidation in neuronal cell lines.** Biochimica et Biophysica Acta 2002 Jul 3;1571(3):201-10.

Choi JI, Malakowsky CA, Talent JM, Conrad CC, Gracy RW. **Identification of oxidized plasma proteins in Alzheimer's disease.** Biochemical and Biophysical Research Communications 2002 May 24;293(5):1566-70.

Richard A. Easom, Ph.D.
Associate Professor and Vice Chair

Donelan MJ, Morfini G, Julyan R, Sommers S, Hays L, Kajio H, Briaud I, Easom RA, Molkentin JD, Brady ST, Rhodes CJ. **Ca²⁺-dependent dephosphorylation of kinesin heavy chain on beta- granules in pancreatic beta-cells. Implications for regulated beta- granule transport and insulin exocytosis.** Journal of Biological Chemistry 2002 Jul 5;277(27):24232-42.

Lawrence MC, Bhatt H, Easom RA. **NFAT regulated insulin gene promoter activity in response to synergistic pathways induced by glucose and glucagon-like peptide-1.** Diabetes 2002 Mar;51(3):691-8.

Ronald H. Goldfarb, Ph.D.
Adjunct Professor

Al-Atrash G, Shetty S, Idell S, Xue Y, Kitson RP, Halady PK, Goldfarb RH. **IL-2-mediated upregulation of uPA and uPAR in natural killer cells.** Biochemical and Biophysical Research Communications 2002 Mar 22;292(1):184-9.

Andreev OA, Reshetnyak YK, Goldfarb RH. **Evidence of inter- and intra-molecular crosslinking of tyrosine residues of calmodulin induced by photo-activation of ruthenium(II).** Photochemical & Photobiological Sciences 2002 Oct;1(10):834-6.

Chen WS, Kitson RP, Goldfarb RH. **Modulation of human NK cell lines by vascular endothelial growth factor and receptor VEGFR-1 (FLT-1).** In Vivo 2002 Nov-Dec;16(6):439-45.

Datta A, Kitson RP, Xue Y, al-Atrash G, Mazar AP, Jones TR, Goldfarb RH. **Combined chemo/anti-angiogenic cancer therapy against Lewis lung carcinoma (3LL) pulmonary metastases.** In Vivo 2002 Nov-Dec;16(6):451-7.

Kim MH, Gutierrez AM, Goldfarb RH. **Different mechanisms of soy isoflavones in cell cycle regulation and inhibition of invasion.** Anticancer Research 2002 Nov-Dec;22(6C):3811-7.

Robert W. Gracy, Ph.D.

Professor and Associate Vice President for Research and Biotechnology

Choi JI, Conrad CC, Malakowsky CA, Talent JM, Yuan CS, Gracy RW. **Flavones from *Scutellaria baicalensis* Georgi attenuate apoptosis and protein oxidation in neuronal cell lines.** Biochimica et Biophysica Acta 2002 Jul 3;1571(3):201-10.

Choi JI, Malakowsky CA, Talent JM, Conrad CC, Gracy RW. **Identification of oxidized plasma proteins in Alzheimer's disease.** Biochemical and Biophysical Research Communications 2002 May 24;293(5):1566-70.

Gracy RW. **Oxidized proteins & ubiquitin conjugates.** Neurobiology of Aging 2002 Jul-Aug;23(4):515-6.

Ben G. Harris, Ph.D.

Professor

Coleman DE, Rao J, Goldsmith EJ, Cook PF, Harris BG. **Crystal structure of the malic enzyme from *Ascaris suum* complexed with nicotinamide adenine dinucleotide at 2.3 Å resolution.** Biochemistry 2002 Jun 4;41(22):6928-38.

Mark E. Hart, Ph.D.

Assistant Professor

Jackson DW, Suzuki K, Oakford LX, Simecka JW, Hart ME, Romeo T. **Biofilm formation and dispersal under the influence of the global regulator CsrA of *Escherichia coli*.** Journal of Bacteriology 2002 Jan;184(1):290-301.

Valderas MW, Gatson JW, Wreyford N, Hart ME. **The superoxide dismutase gene sodM is unique to *Staphylococcus aureus*: absence of sodM in coagulase-negative staphylococci.** Journal of Bacteriology 2002 May;184(9):2465-72.

Jie Huang

Senior Research Assistant

Basu A, Lu D, Sun B, Moor AN, Akkaraju GR, Huang J. **Proteolytic activation of protein kinase C-epsilon by caspase-mediated processing and transduction of antiapoptotic signals.** Journal of Biological Chemistry 2002 Nov 1;277(44):41850-6.

Johnson CL, Lu D, Huang J, Basu A. **Regulation of p53 stabilization by DNA damage and protein kinase C.** Molecular Cancer Therapeutics 2002 Aug;1(10):861-7.

Debra W. Jackson, Ph.D.

Postdoctoral Research Associate

Jackson DW, Simecka JW, Romeo T. **Catabolite repression of *Escherichia coli* biofilm formation.** Journal of Bacteriology 2002 Jun;184(12):3406-10.

Jackson DW, Suzuki K, Oakford LX, Simecka JW, Hart ME, Romeo T. **Biofilm formation and dispersal under the influence of the global regulator CsrA of *Escherichia coli*.** Journal of Bacteriology 2002 Jan;184(1):290-301.

Harlan P. Jones, Ph.D.
Postdoctoral Research Assistant

Jones HP, Tabor LA, Sun XL, Woolard MD, Simecka JW. **Depletion of CD8+ T cells exacerbates CD4+ Th cell-associated inflammatory lesions during murine mycoplasma respiratory disease.** Journal of Immunology 2002 Apr 1;168(7):3493-501.

Sun XL, Hodge LM, Jones HP, Tabor LA, Simecka JW. **Co-expression of granulocyte-macrophage colony-stimulating factor with antigen enhances humoral and tumor immunity after DNA vaccination.** Vaccine 2002 Jan 31;20(9-10):1466-74.

Myoung H. Kim, Ph.D.
Research Assistant Professor

Kim MH, Gutierrez AM, Goldfarb RH. **Different mechanisms of soy isoflavones in cell cycle regulation and inhibition of invasion.** Anticancer Research 2002 Nov-Dec;22(6C):3811-7.

Richard P. Kitson, Ph.D.
Research Associate Professor

Al-Atrash G, Shetty S, Idell S, Xue Y, Kitson RP, Halady PK, Goldfarb RH. **IL-2-mediated upregulation of uPA and uPAR in natural killer cells.** Biochemical and Biophysical Research Communications 2002 Mar 22;292(1):184-9.

Chen WS, Kitson RP, Goldfarb RH. **Modulation of human NK cell lines by vascular endothelial growth factor and receptor VEGFR-1 (FLT-1).** In Vivo 2002 Nov-Dec;16(6):439-45.

Datta A, Kitson RP, Xue Y, al-Atrash G, Mazar AP, Jones TR, Goldfarb RH. **Combined chemo/anti-angiogenic cancer therapy against Lewis lung carcinoma (3LL) pulmonary metastases.** In Vivo 2002 Nov-Dec;16(6):451-7.

Pappa R. Kumaresan, Ph.D.
Research Assistant Professor

Kumaresan PR, Lai W, Chuang SS, Bennett M, Mathew PA. **CS1, a novel member of the CD2 family, is homophilic and regulates NK cell function.** Molecular Immunology 2002 Sep 15;39(1-2):1-8.

Andras G. Lacko, Ph.D.
Professor

Lacko AG, Nair M, Paranjape S, Johnso S, McConathy WJ. **High density lipoprotein complexes as delivery vehicles for anticancer drugs.** Anticancer Research 2002 Jul-Aug;22(4):2045-9.

Christina A. Malakowsky
Research Assistant

Choi JI, Conrad CC, Malakowsky CA, Talent JM, Yuan CS, Gracy RW. **Flavones from *Scutellaria baicalensis* Georgi attenuate apoptosis and protein oxidation in neuronal cell lines.** Biochimica et Biophysica Acta 2002 Jul 3;1571(3):201-10.

Choi JI, Malakowsky CA, Talent JM, Conrad CC, Gracy RW. **Identification of oxidized plasma proteins in Alzheimer's disease.** Biochemical and Biophysical Research Communications 2002 May 24;293(5):1566-70.

Porunelloor A. Mathew, Ph.D.
Associate Professor

Kumaresan PR, Lai W, Chuang SS, Bennett M, Mathew PA. **CS1, a novel member of the CD2 family, is homophilic and regulates NK cell function.** Molecular Immunology 2002 Sep 15;39(1-2):1-8.

Maya Nair, Ph.D.
Research Assistant Professor

Lacko AG, Nair M, Paranjape S, Johnso S, McConathy WJ. **High density lipoprotein complexes as delivery vehicles for anticancer drugs.** Anticancer Research 2002 Jul-Aug;22(4):2045-9.

Jagannatha Rao, Ph.D.
Research Assistant Professor

Coleman DE, Rao J, Goldsmith EJ, Cook PF, Harris BG. **Crystal structure of the malic enzyme from *Ascaris suum* complexed with nicotinamide adenine dinucleotide at 2.3 Å resolution.** Biochemistry 2002 Jun 4;41(22):6928-38.

Trivedi V, Gupta A, Jala VR, Saravanan P, Rao J, Rao NA, Savithri HS, Subramanya HS. **Crystal structure of binary and ternary complexes of serine hydroxymethyltransferase from *Bacillus stearothermophilus*: insights into the catalytic mechanism.** Journal of Biological Chemistry 2002 May 10;277(19):17161-9.

Yana K. Reshetnyak, Ph.D.
Postdoctoral Research Assistant

Andreev OA, Reshetnyak YK, Goldfarb RH. **Evidence of inter- and intra-molecular crosslinking of tyrosine residues of calmodulin induced by photo-activation of ruthenium(II).** Photochemical & Photobiological Sciences 2002 Oct;1(10):834-6.

Reshetnyak YK, Andreev OA. **The interdomain motions in myosin subfragment 1.** Biophysical Chemistry 2001 Dec 11;94(1-2):41-6.

Tony Romeo, Ph.D.
Adjunct Professor

Baker CS, Morozov I, Suzuki K, Romeo T, Babitzke P. **CsrA regulates glycogen biosynthesis by preventing translation of glgC in *Escherichia coli*.** Molecular Microbiology 2002 Jun;44(6):1599-610.

Jackson DW, Simecka JW, Romeo T. **Catabolite repression of *Escherichia coli* biofilm formation.** Journal of Bacteriology 2002 Jun;184(12):3406-10.

Jackson DW, Suzuki K, Oakford LX, Simecka JW, Hart ME, Romeo T. **Biofilm formation and dispersal under the influence of the global regulator CsrA of *Escherichia coli*.** Journal of Bacteriology 2002 Jan;184(1):290-301.

Suzuki K, Wang X, Weilbacher T, Pernestig AK, Melefors O, Georgellis D, Babitzke P, Romeo T. **Regulatory circuitry of the CsrA/CsrB and BarA/UvrY systems of *Escherichia coli*.** Journal of Bacteriology 2002 Sep;184(18):5130-40.

Jerry W. Simecka, Ph.D.
Associate Professor

Hodge LM, Simecka JW. **Role of upper and lower respiratory tract immunity in resistance to *Mycoplasma* respiratory disease.** Journal of Infectious Diseases 2002 Jul 15;186(2):290-4.

Jackson DW, Simecka JW, Romeo T. **Catabolite repression of *Escherichia coli* biofilm formation.** Journal of Bacteriology 2002 Jun;184(12):3406-10.

Jackson DW, Suzuki K, Oakford LX, Simecka JW, Hart ME, Romeo T. **Biofilm formation and dispersal under the influence of the global regulator CsrA of *Escherichia coli*.** Journal of Bacteriology 2002 Jan;184(1):290-301.

Jones HP, Tabor LA, Sun XL, Woolard MD, Simecka JW. **Depletion of CD8⁺ T cells exacerbates CD4⁺ Th cell-associated inflammatory lesions during murine mycoplasma respiratory disease.** Journal of Immunology 2002 Apr 1;168(7):3493-501.

Sun XL, Hodge LM, Jones HP, Tabor LA, Simecka JW. **Co-expression of granulocyte-macrophage colony-stimulating factor with antigen enhances humoral and tumor immunity after DNA vaccination.** Vaccine 2002 Jan 31;20(9-10):1466-74.

Xiang Le Sun, Ph.D.
Postdoctoral Research Associate

Jones HP, Tabor LA, Sun XL, Woolard MD, Simecka JW. **Depletion of CD8⁺ T cells exacerbates CD4⁺ Th cell-associated inflammatory lesions during murine mycoplasma respiratory disease.** Journal of Immunology 2002 Apr 1;168(7):3493-501.

Sun XL, Hodge LM, Jones HP, Tabor LA, Simecka JW. **Co-expression of granulocyte-macrophage colony-stimulating factor with antigen enhances humoral and tumor immunity after DNA vaccination.** Vaccine 2002 Jan 31;20(9-10):1466-74.

Kazushi Suzuki, Ph.D.
Postdoctoral Research Assistant

Baker CS, Morozov I, Suzuki K, Romeo T, Babitzke P. **CsrA regulates glycogen biosynthesis by preventing translation of glgC in *Escherichia coli*.** Molecular Microbiology 2002 Jun;44(6):1599-610.

Jackson DW, Suzuki K, Oakford LX, Simecka JW, Hart ME, Romeo T. **Biofilm formation and dispersal under the influence of the global regulator CsrA of *Escherichia coli*.** Journal of Bacteriology 2002 Jan;184(1):290-301.

Suzuki K, Wang X, Weilbacher T, Pernestig AK, Melefors O, Georgellis D, Babitzke P, Romeo T. **Regulatory circuitry of the CsrA/CsrB and BarA/UvrY systems of *Escherichia coli*.** Journal of Bacteriology 2002 Sep;184(18):5130-40.

John M. Talent
Research Associate

Choi JI, Conrad CC, Malakowsky CA, Talent JM, Yuan CS, Gracy RW. **Flavones from *Scutellaria baicalensis* Georgi attenuate apoptosis and protein oxidation in neuronal cell lines.** Biochimica et Biophysica Acta 2002 Jul 3;1571(3):201-10.

Choi JI, Malakowsky CA, Talent JM, Conrad CC, Gracy RW. **Identification of oxidized plasma proteins in Alzheimer's disease.** Biochemical and Biophysical Research Communications 2002 May 24;293(5):1566-70.

Alan L. Weiner, Ph.D.
Adjunct Professor

Fellman RL, Sullivan EK, Ratliff M, Silver LH, Whitson JT, Turner FD, Weiner AL, Davis AA. **Comparison of travoprost 0.0015% and 0.004% with timolol 0.5% in patients with elevated intraocular pressure: a 6-month, masked, multicenter trial.** Ophthalmology 2002 May;109(5):998-1008.

Hellberg MR, McLaughlin MA, Sharif NA, DeSantis L, Dean TR, Kyba EP, Bishop JE, Klimko PG, Zinke PW, Selliah RD, Barnes G, DeFaller J, Kothe A, Landry T, Sullivan EK, Andrew R, Davis AA, Silver L, Bergamini MVW, Robertson S, Weiner AL, Sallee VL. **Identification and characterization of the ocular hypotensive efficacy of travoprost, a potent and selective FP prostaglandin receptor agonist, and AL-6598, a DP prostaglandin receptor agonist.** Survey of Ophthalmology 2002 Aug;47 Suppl 1:S13-33.

Natalie Wreyford
Senior Research Assistant

Valderas MW, Gatson JW, Wreyford N, Hart ME. **The superoxide dismutase gene sodM is unique to *Staphylococcus aureus*: absence of sodM in coagulase-negative staphylococci.** Journal of Bacteriology 2002 May;184(9):2465-72.

Yaming Xue
Senior Research Assistant

Al-Atrash G, Shetty S, Idell S, Xue Y, Kitson RP, Halady PK, Goldfarb RH. **IL-2-mediated upregulation of uPA and uPAR in natural killer cells.** Biochemical and Biophysical Research Communications 2002 Mar 22;292(1):184-9.

Datta A, Kitson RP, Xue Y, al-Atrash G, Mazar AP, Jones TR, Goldfarb RH. **Combined chemo/anti-angiogenic cancer therapy against Lewis lung carcinoma (3LL) pulmonary metastases.** In Vivo 2002 Nov-Dec;16(6):451-7.

Pharmacology and Neuroscience

Cathy L. Bell-Horner
Senior Research Assistant

Dibas MI, Gonzales EB, Das P, Bell-Horner CL, Dillon GH. **Identification of a novel residue within the second transmembrane domain that confers use-facilitated block by picrotoxin in glycine α 1 receptors.** Journal of Biological Chemistry 2002 Mar 15;277(11):9112-7.

Michael V. W. Bergamini, Ph.D.
Adjunct Professor

Hellberg MR, McLaughlin MA, Sharif NA, DeSantis L, Dean TR, Kyba EP, Bishop JE, Klimko PG, Zinke PW, Selliah RD, Barnes G, DeFaller J, Kothe A, Landry T, Sullivan EK, Andrew R, Davis AA, Silver L, Bergamini MVW, Robertson S, Weiner AL, Sallee VL. **Identification and characterization of the ocular hypotensive efficacy of travoprost, a potent and selective FP prostaglandin receptor agonist, and AL-6598, a DP prostaglandin receptor agonist.** Survey of Ophthalmology 2002 Aug;47 Suppl 1:S13-33.

Hriday K. Das, Ph.D.
Associate Professor

Pastorcic MG, Das HK. **Activation of transcription of the human presenilin 1 gene by 12-O-tetradecanoylphorbol 13-acetate.** European Journal of Biochemistry 2002 Dec;269(23):5956-62.

Christopher M. de Fiebre, Ph.D.
Assistant Professor

Dawson R, Messina SM, Stokes C, Salyani S, Alcalay N, de Fiebre NC, de Fiebre CM. **Solid-phase extraction and HPLC assay of nicotine and cotinine in plasma and brain.** Toxicology Mechanisms & Methods 2002 Jan;12(1):45-58.

de Fiebre NC, Dawson R Jr, de Fiebre CM. **The selectively bred high alcohol sensitivity (HAS) and low alcohol sensitivity (LAS) rats differ in sensitivity to nicotine.** Alcoholism, Clinical and Experimental Research 2002 Jun;26(6):765-72.

Nancyellen C. de Fiebre
Research Associate

Dawson R, Messina SM, Stokes C, Salyani S, Alcalay N, de Fiebre NC, de Fiebre CM. **Solid-phase extraction and HPLC assay of nicotine and cotinine in plasma and brain.** Toxicology Mechanisms & Methods 2002 Jan;12(1):45-58.

de Fiebre NC, Dawson R Jr, de Fiebre CM. **The selectively bred high alcohol sensitivity (HAS) and low alcohol sensitivity (LAS) rats differ in sensitivity to nicotine.** Alcoholism, Clinical and Experimental Research 2002 Jun;26(6):765-72.

Louis DeSantis, Ph.D.
Adjunct Professor

Hellberg MR, McLaughlin MA, Sharif NA, DeSantis L, Dean TR, Kyba EP, Bishop JE, Klimko PG, Zinke PW, Selliah RD, Barnes G, DeFaller J, Kothe A, Landry T, Sullivan EK, Andrew R, Davis AA, Silver L, Bergamini MVW, Robertson S, Weiner AL, Sallee VL. **Identification and characterization of the ocular hypotensive efficacy of travoprost, a potent and selective FP prostaglandin receptor agonist, and AL-6598, a DP prostaglandin receptor agonist.** Survey of Ophthalmology 2002 Aug;47 Suppl 1:S13-33.

Glenn H. Dillon, Ph.D.
Associate Professor

Dibas MI, Gonzales EB, Das P, Bell-Horner CL, Dillon GH. **Identification of a novel residue within the second transmembrane domain that confers use-facilitated block by picrotoxin in glycine α 1 receptors.** Journal of Biological Chemistry 2002 Mar 15;277(11):9112-7.

Huang RQ, Dillon GH. **Functional characterization of GABA(A) receptors in neonatal hypothalamic brain slice.** Journal of Neurophysiology 2002 Oct;88(4):1655-63.

Michael J. Forster, Ph.D.
Professor and Vice Chair

Floyd RA, Hensley K, Forster MJ, Kelleher-Anderson JA, Wood PL. **Nitrones as neuroprotectants and antiaging drugs.** Annals of the New York Academy of Sciences 2002 Apr;959:321-9.

Floyd RA, Hensley K, Forster MJ, Kelleher-Andersson JA, Wood PL. **Nitrones, their value as therapeutics and probes to understand aging.** Mechanisms of Ageing and Development 2002 Apr 30;123(8):1021-31.

Kwong LK, Kamzalov S, Rebrin I, Bayne A, Jana C, Morris P, Forster MJ, Sohal RS. **Effects of coenzyme Q(10) administration on its tissue concentrations, mitochondrial oxidant generation, and oxidative stress in the rat.** Free Radical Biology and Medicine 2002 Sep 1;33(5):627-38.

McMillan DR, Christians E, Forster MJ, Xiao X, Connell P, Plumier JC, Zuo X, Richardson J, Morgan S, Benjamin IJ. **Heat shock transcription factor 2 is not essential for embryonic development, fertility, or adult cognitive and psychomotor function in mice.** Molecular and Cellular Biology 2002 Nov;22(22):8005-14.

Michael B. Gatch, Ph.D.
Research Assistant Professor

Gatch MB. **Nitrendipine blocks the nociceptive effects of chronically administered ethanol.** Alcoholism, Clinical and Experimental Research 2002 Aug;26(8):1181-7.

Gatch MB, Jung ME, Wallis CJ, Lal H. **Effects of GABA(A) compounds on mCPP drug discrimination in rats.** Life Sciences 2002 Oct 18;71(22):2657-65.

Gatch MB, Selvig MK. **Theophylline blocks ethanol withdrawal-induced hyperalgesia.** Alcohol and Alcoholism 2002 Jul-Aug;37(4):313-7.

Jung ME, Lal H, Gatch MB. **The discriminative stimulus effects of pentylentetrazol as a model of**

anxiety: recent developments. Neuroscience and Biobehavioral Reviews 2002 Jun;26(4):429-39.

Ren-Qi Huang, Ph.D.

Research Assistant Professor

Huang RQ, Dillon GH. **Functional characterization of GABA(A) receptors in neonatal hypothalamic brain slice.** Journal of Neurophysiology 2002 Oct;88(4):1655-63.

Jung, Marianna E., Ph.D.

Postdoctoral Research Associate

Gatch MB, Jung ME, Wallis CJ, Lal H. **Effects of GABA(A) compounds on mCPP drug discrimination in rats.** Life Sciences 2002 Oct 18;71(22):2657-65.

Jung ME, Lal H, Gatch MB. **The discriminative stimulus effects of pentylentetrazol as a model of anxiety: recent developments.** Neuroscience and Biobehavioral Reviews 2002 Jun;26(4):429-39.

Jung ME, Yang SH, Brun-Zinkernagel AM, Simpkins JW. **Estradiol protects against cerebellar damage and motor deficit in ethanol-withdrawn rats.** Alcohol 2002 Feb;26(2):83-93.

George R. King, Ph.D.

Research Associate Professor

King GR, Pinto G, Konen J, Hillburn C, Tran S, Love W, Cayse R, Castro G. **The effects of continuous cocaine duration on the induction of behavioral tolerance and dopamine autoreceptor function.** European Journal of Pharmacology 2002 Jun 20;446(1-3):111-8.

Jennifer Konen

Laboratory Assistant

King GR, Pinto G, Konen J, Hillburn C, Tran S, Love W, Cayse R, Castro G. **The effects of continuous cocaine duration on the induction of behavioral tolerance and dopamine autoreceptor function.** European Journal of Pharmacology 2002 Jun 20;446(1-3):111-8.

Peter Koulen, Ph.D.

Assistant Professor

Hack I, Koulen P, Peichl L, Brandstatter JH. **Development of glutamatergic synapses in the rat retina: the postnatal expression of ionotropic glutamate receptor subunits.** Visual Neuroscience 2002 Jan-Feb;19(1):1-13.

Johanning FW, Zochowski M, Conway SJ, Holmes AB, Koulen P, Ehrlich BE. **Distinct intracellular calcium transients in neurites and somata integrate neuronal signals.** Journal of Neuroscience 2002 Jul 1;22(13):5344-53.

Koulen P, Brandstatter JH. **Pre- and postsynaptic sites of action of mGluR8a in the mammalian retina.** Investigative Ophthalmology and Visual Science 2002 Jun;43(6):1933-40.

Koulen P, Cai Y, Geng L, Maeda Y, Nishimura S, Witzgall R, Ehrlich BE, Somlo S. **Polycystin-2 is an intracellular calcium release channel.** Nature Cell Biology 2002 Mar;4(3):191-7.

Raghu Krishnamoorthy, Ph.D.
Research Assistant Professor

Agarwal N, Martin E, Krishnamoorthy R, Landers R, Wen R, Krueger S, Kapin MA, Collier RJ. **Levobetaxolol-induced up-regulation of retinal bFGF and CNTF mRNAs and preservation of retinal function against a photic-induced retinopathy.** Experimental Eye Research 2002 Apr;74(4):445-53.

Devarajan E, Sahin AA, Chen JS, Krishnamoorthy R, Agarwal N, Brun-Zinkernagel AM, Sapino A, Zhang F, Sharma D, Yang XH, Tora AD, Mehta K. **Down-regulation of caspase 3 in breast cancer: a possible mechanism for chemoresistance.** Oncogene 2002 Dec 12;21(57):8843-51.

Prasanna G, Krishnamoorthy R, Clark AF, Wordinger RJ, Yorio T. **Human optic nerve head astrocytes as a target for endothelin-1.** Investigative Ophthalmology and Visual Science 2002 Aug;43(8):2704-13.

Yorio T, Krishnamoorthy R, Prasanna G. **Endothelin: is it a contributor to glaucoma pathophysiology?** Journal of Glaucoma 2002 Jun;11(3):259-70.

Ran Liu, M.D.
Senior Research Assistant

Liu R, Yang SH, Perez EJ, Yi KD, Wu SS, Eberst K, Prokai L, Prokai-Tatrai K, Cai ZY, Covey DF, Day AL, Simpkins JW. **Neuroprotective effects of a novel non-receptor-binding estrogen analogue: in vitro and in vivo analysis.** Stroke 2002 Oct;33(10):2485-91.

Yang SH, Perez EJ, Cutright J, Liu R, He Z, Day AL, Simpkins JW. **Testosterone increases neurotoxicity of glutamate in vitro and ischemia-reperfusion injury in an animal model.** Journal of Applied Physiology 2002 Jan;92(1):195-201.

Iok-Hou Pang, Ph.D.
Adjunct Associate Professor

Li B, Pang IH, Barnes G, McLaughlin M, Holt W. **A new method and device to induce transient retinal ischemia in the rat.** Current Eye Research 2002 Jun;24(6):458-64.

Pang IH, Clark AF. **Advances in glaucoma therapeutics.** Expert Opinion on Emerging Drugs 2002 May;7(1):141-63.

Martine G. Pastorcic, Ph.D.
Postdoctoral Research Associate

Pastorcic MG, Das HK. **Activation of transcription of the human presenilin 1 gene by 12-O-tetradecanoylphorbol 13-acetate.** European Journal of Biochemistry 2002 Dec;269(23):5956-62.

Gail Pinto
Laboratory Assistant

King GR, Pinto G, Konen J, Hillburn C, Tran S, Love W, Cayse R, Castro G. **The effects of continuous cocaine duration on the induction of behavioral tolerance and dopamine autoreceptor function.** European Journal of Pharmacology 2002 Jun 20;446(1-3):111-8.

Ganesh Prasanna, Ph.D.
Research Assistant Professor

Prasanna G, Krishnamoorthy R, Clark AF, Wordinger RJ, Yorio T. **Human optic nerve head astrocytes as a target for endothelin-1.** Investigative Ophthalmology and Visual Science 2002 Aug;43(8):2704-13.

Yorio T, Krishnamoorthy R, Prasanna G. **Endothelin: is it a contributor to glaucoma pathophysiology?** Journal of Glaucoma 2002 Jun;11(3):259-70.

Meghan K. Selvig
Research Assistant

Gatch MB, Selvig MK. **Theophylline blocks ethanol withdrawal-induced hyperalgesia.** Alcohol and Alcoholism 2002 Jul-Aug;37(4):313-7.

Naj A. Sharif, Ph.D.
Adjunct Associate Professor

Crider JY, Sharif NA. **Adenylyl cyclase activity mediated by beta-adrenoceptors in immortalized human trabecular meshwork and non-pigmented ciliary epithelial cells.** Journal of Ocular Pharmacology and Therapeutics 2002 Jun;18(3):221-30.

Harris LC, Awe SO, Opere CA, LeDay AM, Ohia SE, Sharif NA. **Pharmacology of serotonin receptors modulating electrically-induced [3h]-norepinephrine release from isolated mammalian iris-ciliary bodies.** Journal of Ocular Pharmacology and Therapeutics 2002 Aug;18(4):339-48.

Hellberg MR, Conrow RE, Sharif NA, McLaughlin MA, Bishop JE, Crider JY, Dean WD, DeWolf KA, Pierce DR, Sallee VL, Selliah RD, Severns BS, Sproull SJ, Williams GW, Zinke PW, Klimko PG. **3-Oxa-15-cyclohexyl prostaglandin DP receptor agonists as topical antiglaucoma agents.** Bioorganic and Medicinal Chemistry 2002 Jun;10(6):2031-49.

Hellberg MR, McLaughlin MA, Sharif NA, DeSantis L, Dean TR, Kyba EP, Bishop JE, Klimko PG, Zinke PW, Selliah RD, Barnes G, DeFaller J, Kothe A, Landry T, Sullivan EK, Andrew R, Davis AA, Silver L, Bergamini MVW, Robertson S, Weiner AL, Sallee VL. **Identification and characterization of the ocular hypotensive efficacy of travoprost, a potent and selective FP prostaglandin receptor agonist, and AL-6598, a DP prostaglandin receptor agonist.** Survey of Ophthalmology 2002 Aug;47 Suppl 1:S13-33.

Sharif NA, Davis TL. **Cloned human EP1 prostanoid receptor pharmacology characterized using radioligand binding techniques.** Journal of Pharmacy and Pharmacology 2002 Apr;54(4):539-47.

Sharif NA, Kelly CR, Crider JY. **Agonist activity of bimatoprost, travoprost, latanoprost, unoprostone isopropyl ester and other prostaglandin analogs at the cloned human ciliary body FP prostaglandin receptor.** Journal of Ocular Pharmacology and Therapeutics 2002 Aug;18(4):313-24.

Sharif NA, Senchyna M, Xu SX. **Pharmacological and molecular biological (RT-PCR) characterization of functional TP prostanoid receptors in immortalized human non-pigmented ciliary epithelial cells.** Journal of Ocular Pharmacology and Therapeutics 2002 Apr;18(2):141-62.

James W. Simpkins, Ph.D.
Professor and Chair

He Z, He YJ, Day AL, Simpkins JW. **Proestrus levels of estradiol during transient global cerebral ischemia improves the histological outcome of the hippocampal CA1 region: perfusion-dependent and -independent mechanisms.** Journal of the Neurological Sciences 2002 Jan 15;193(2):79-87.

Jung ME, Yang SH, Brun-Zinkernagel AM, Simpkins JW. **Estradiol protects against cerebellar damage and motor deficit in ethanol-withdrawn rats.** Alcohol 2002 Feb;26(2):83-93.

Liu R, Yang SH, Perez EJ, Yi KD, Wu SS, Eberst K, Prokai L, Prokai-Tatrai K, Cai ZY, Covey DF, Day AL, Simpkins JW. **Neuroprotective effects of a novel non-receptor-binding estrogen analogue: in vitro and in vivo analysis.** Stroke 2002 Oct;33(10):2485-91.

Yang SH, Perez EJ, Cutright J, Liu R, He Z, Day AL, Simpkins JW. **Testosterone increases neurotoxicity of glutamate in vitro and ischemia-reperfusion injury in an animal model.** Journal of Applied Physiology 2002 Jan;92(1):195-201.

Meharvan Singh, Ph.D.
Assistant Professor

Setalo G Jr, Singh M, Guan X, Toran-Allerand CD. **Estradiol-induced phosphorylation of ERK1/2 in explants of the mouse cerebral cortex: the roles of heat shock protein 90 (Hsp90) and MEK2.** Journal of Neurobiology 2002 Jan;50(1):1-12.

Sophie Tran
Senior Research Assistant

King GR, Pinto G, Konen J, Hillburn C, Tran S, Love W, Cayse R, Castro G. **The effects of continuous cocaine duration on the induction of behavioral tolerance and dopamine autoreceptor function.** European Journal of Pharmacology 2002 Jun 20;446(1-3):111-8.

David G. Watson, Ph.D.
Adjunct Assistant Professor

Watterson JM, Watson DG, Meyer EM, Lenox RH. **A role for protein kinase C and its substrates in the action of valproic acid in the brain: implications for neural plasticity.** Brain Research 2002 Apr 26;934(1):69-80.

Thomas Yorio, Ph.D.
Professor and Dean of Graduate School of Biomedical Sciences

Prasanna G, Krishnamoorthy R, Clark AF, Wordinger RJ, Yorio T. **Human optic nerve head astrocytes as a target for endothelin-1.** Investigative Ophthalmology and Visual Science 2002 Aug;43(8):2704-13.

Stokely ME, Brady ST, Yorio T. **Effects of endothelin-1 on components of anterograde axonal transport in optic nerve.** Investigative Ophthalmology and Visual Science 2002 Oct;43(10):3223-30.

Yorio T, Krishnamoorthy R, Prasanna G. **Endothelin: is it a contributor to glaucoma pathophysiology?** Journal of Glaucoma 2002 Jun;11(3):259-70.

Research and Biotechnology

Geoffrey F. Grant, Ph.D.
Senior Technology Manager

Grant GF. **The hot brain - could it control your temper...ature?** [Book Review]. Trends in Endocrinology & Metabolism 2002 Jan/Feb;13(1):44.

Surgery

Marc B. Hahn, D.O.
Professor and Dean of Texas College of Osteopathic Medicine

Hassenbuch S, Burchiel K, Coffey RJ, Cousins MJ, Deer T, Hahn MB, Pen SD, Follett KA, Krames E, Rogers JN, Sagher O, Staats PS, Wallace M, Willis KD. **Management of intrathecal catheter-tip inflammatory masses: a consensus statement.** Pain Medicine 2002 Dec;3(4):313-23.

Weaver, MA, Tandatnick, CA, Hahn, MB. **Peripheral nerve blockade.** In: Raj, PP, editor. Textbook of regional anesthesia. New York: Churchill Livingstone; 2002. pp. 857-70.

Albert H. Olivencia-Yurvati, D.O., F.A.C.O.S.
Associate Professor

Ogoh S, Wasmund WE, Keller DM, Olivencia-Yurvati AH, Gallagher KM, Mitchell JH, Raven PB. **Role of central command in carotid baroreflex resetting in humans during static exercise.** Journal of Physiology 2002 Aug 15;543(pt. 1):349-64.

Olivencia-Yurvati AH, Wallace WE, Wallace N, Dimitrijevic SD, Knust JK, Haas L, Raven PB. **Intraoperative treatment strategy to reduce the incidence of postcardiopulmonary bypass atrial fibrillation.** Perfusion 2002 May;17 Suppl:35-9.

School of Public Health

Biostatistics

Shande Chen, Ph.D.
Associate Professor

Coon JS, Marcus E, Gupta-Burt S, Seelig S, Jacobson K, Chen S, Renta V, Fronda G, Preisler HD.
Amplification and overexpression of topoisomerase II α predict response to anthracycline-based therapy in locally advanced breast cancer. Clinical Cancer Research 2002 Apr;8(4):1061-7.

Daisha J. Cipher, Ph.D.
Assistant Professor

Cipher DJ, Clifford PA, Schumacker RE. **The heterogeneous pain personality: diverse coping styles among sufferers of chronic pain.** Alternative Therapies in Health and Medicine 2002 Nov-Dec;8(6):60-9.

Cipher DJ, Fernandez E, Clifford PA. **Coping style influences compliance with multidisciplinary pain management.** Journal of Health Psychology 2002;7(6):665-73.

Hooker RS, Hess B, Cipher DJ. **A comparison of physician assistant programs by national certification examination scores.** Perspective on Physician Assistant Education 2002 Summer/Autumn;13(2):81-6.

Telford C, Edwards TD, Cipher DJ. **Performance in physical examination skills course as a predictor of students' risk for attrition.** Perspective on Physician Assistant Education 2002 Summer/Autumn;13(2):87-91.

Ywanda Kimbrough
Senior Administrative Services Officer

Johnson LF, Broyles K, Broyles M, DeLozier K, Halligan A, Kimbrough Y. **Subject index to volume 101.** Journal of the American Osteopathic Association 2002 Mar;102(3):161-89.

Randall E. Schumacker, Ph.D.
Adjunct Professor

Cipher DJ, Clifford PA, Schumacker RE. **The heterogeneous pain personality: diverse coping styles among sufferers of chronic pain.** Alternative Therapies in Health and Medicine 2002 Nov-Dec;8(6):60-9.

Schumacker RE. **Latent variable interaction modeling.** Structural Equation Modeling 2002;9(1):40-54.

Karan P. Singh, Ph.D.
Professor and Chair

Shanmugam R, Bartolucci AA, Singh KP. **The analysis of neurologic studies using an extended**

exponential model. Mathematics and Computers in Simulation 2002 May 10;59(1-3):81-5.

Wulu JT, Singh KP, Famoye F, Thomas T N, McGwin G. **Regression analysis of count data.** Journal of the Indian Society of Agricultural Statistics 2002 Aug;55(2):220-31.

Environmental and Occupational Health

Miguel F. Acevedo, Ph.D.
Adjunct Professor

Acevedo MF, Raventos J. **Growth dynamics of three tropical savanna grass species: an individual-module model.** Ecological Modelling 2002 Aug 15;154(1-2):45-60.

Kenneth L. Dickson, Ph.D.
Adjunct Professor

Allen HJ, Dickson KL, Martin H, Thuesen K, Waller WT. **Monitoring watersheds: biomonitors and other measures.** Journal of Urban Technology 2002 Aug;9(2):1-19.

Arthur J. Goven, Ph.D.
Adjunct Professor

Doster JA, Harvey MB, Riley CA, Goven AJ, Moorefield R. **Spirituality and cardiovascular risk.** Journal of Religion and Health 2002 Spring;41(1):69-79.

Paul F. Hudak, Ph.D.
Adjunct Associate Professor

Alderman JH, Hudak PF, Acevedo M. **Chemical ratios and groundwater contamination in East Texas.** Bulletin of Environmental Contamination and Toxicology 2002 Dec;69(6):793-9.

Hudak PF. **Associations between distance lags, groundwater velocities, and detection efficiencies in groundwater monitoring networks.** Environmental Monitoring and Assessment 2002 Apr;75(2):215-21.

Hudak PF. **Associations between rural land uses and ground water quality in the Ogallala Aquifer, northwest Texas.** Ground Water Monitoring & Remediation 2002 Fall;22(4):117-21.

Hudak PF. **Designing equitemporal monitoring networks to detect contaminants in groundwater.** Bulletin of Environmental Contamination and Toxicology 2002 Feb;68(2):168-72.

Hudak PF. **Efficiency comparison of graphical approaches for designing contaminant detection networks in groundwater.** Water Resources Research 2002 Dec 7;38(12):art.no.1282.

Hudak PF. **Spontaneous combustion of shale spoils at a sanitary landfill.** Waste Management (New York, N.Y.) 2002;22(6):687-8.

Minhe Ji, Ph.D.
Adjunct Assistant Professor

Ji M. **Fuzzy modeling of African ecoregions and ecotones using AVHRR NDVI temporal imagery.** Geocarto International 2002;17(1):21-30.

James H. Kennedy, Ph.D.
Adjunct Professor

Balci P, Kennedy JH. **Secondary production of *Apedilum elachistum* Townes (Diptera: Chironomidae) in simulated reservoir wetlands.** Wetlands 2002 Dec;22(4):669-76.

Thomas W. La Point, Ph.D.
Adjunct Professor

Hemming JM, Turner PK, Brooks BW, Waller WT, La Point TW. **Assessment of toxicity reduction in wastewater effluent flowing through a treatment wetland using *Pimephales promelas*, *Ceriodaphnia dubia*, and *Vibrio fischeri*.** Archives of Environmental Contamination and Toxicology 2002 Jan;42(1):9-16.

Peng H, Brooks BW, Chan R, Chyan O, La Point TW. **Response of *Ceriodaphnia dubia* to ionic silver: discrepancies among model predictions, measured concentrations and mortality.** Chemosphere 2002 Feb;46(7):1141-6.

Norman M. Trieff, Ph.D.
Professor

Pagano G, de Biase A, Iaccarino M, Meric S, Petruzzelli D, Tunay O, Warnau M, Trieff NM. **Bauxite manufacturing residues from Gardanne (France) and Portovesme (Italy) exert different patterns of pollution and toxicity to sea urchin embryos.** Environmental Toxicology and Chemistry 2002;21(6):1272-8.

Pagano, G, Korkina, LG, Iaccarino, M, de Biase, A, Deeva, IB, Doronin, YK, Guida, M, Melluso, G, Meric, S, Oral, R, Trieff, NM, Warnau, M. **Developmental, cytogenetic and biochemical effects of spiked or environmentally polluted sediments in sea urchin bioassays.** In: Garrigues, P, Barth, H, Walker, CH, et al., editors. Biomarkers in marine organisms : a practical approach. Amsterdam: Elsevier; 2001. pp. 85-129.

William T. Waller, Ph.D.
Adjunct Professor

Allen HJ, Dickson KL, Martin H, Thuesen K, Waller WT. **Monitoring watersheds: biomonitors and other measures.** Journal of Urban Technology 2002 Aug;9(2):1-19.

Elia AC, Waller WT, Norton SJ. **Biochemical responses of bluegill sunfish (*Lepomis macrochirus*, Rafinesque) to atrazine induced oxidative stress.** Bulletin of Environmental Contamination and Toxicology 2002 Jun;68(6):809-16.

Hemming JM, Turner PK, Brooks BW, Waller WT, La Point TW. **Assessment of toxicity reduction in wastewater effluent flowing through a treatment wetland using *Pimephales promelas*, *Ceriodaphnia dubia*, and *Vibrio fischeri*.** Archives of Environmental Contamination and Toxicology 2002 Jan;42(1):9-16.

Epidemiology

Umed A. Ajani, M.B.B.S., Ph.D.
Assistant Professor

Cook NR, Bensenor IM, Lotufo PA, Lee IM, Skerrett PJ, Chown MJ, Ajani UA, Manson JE, Buring JE. **Migraine and coronary heart disease in women and men.** Headache 2002 Sep;42(8):715-27.

Zee RY, Solomon SD, Ajani UA, Pfeffer MA, Lindpaintner K. **A prospective evaluation of the angiotensin-converting enzyme D/I polymorphism and left ventricular remodeling in the 'Healing and Early Afterload Reducing Therapy' study.** Clinical Genetics 2002 Jan;61(1):21-5.

Manuel Bayona-Celis, M.D., Ph.D.
Associate Professor

Bayona-Celis M, Montealegre F, Gomes de Andrade VL, Trevino FM. **Prognostic factors of severe asthma in Puerto Rico.** Puerto Rico Health Sciences Journal 2002 Sep;21(3):213-9.

Montealegre F, Bayona-Celis M, Chardon D, Trevino FM. **Age, gender and seasonal patterns of asthma in emergency departments of southern Puerto Rico.** Puerto Rico Health Sciences Journal 2002 Sep;21(3):207-12.

Urrutia-Rojas X, Bayona-Celis M, Ahmad N, Alvarez-Garriga C, Marruffo M, Menchaca J. **Factors associated with overweight and obesity in Fort Worth, Texas, school children.** Hispanic Health Care International 2002 Summer;1(1):31-41.

Sally Blakley, Ph.D.
Assistant Professor

Fulda KG, Licciardone JC, Rene AA, Blakley S. **A study of hepatitis A seropositivity in Dallas County, Texas, 1998 through 1999.** Texas Medicine 2002 Dec;98(12):50-5.

Raul Caetano, M.D., M.P.H., Ph.D.
Adjunct Professor

Caetano R. **Deaths from alcohol poisonings: a Finnish report of public health importance.** Addiction 2002 Aug;97(8):929.

Caetano R, Cunradi C. **Alcohol dependence: a public health perspective.** Addiction 2002 Jun;97(6):633-45.

Caetano R, Schafer J, Field C, Nelson SM. **Agreement on reports of intimate partner violence among white, black, and hispanic couples in the United States.** Journal of Interpersonal Violence 2002 Dec;17(12):1308-22.

Cunradi CB, Caetano R, Schafer J. **Alcohol-related problems, drug use, and male intimate partner violence severity among US couples.** Alcoholism, Clinical and Experimental Research 2002 Apr;26(4):493-500.

Cunradi CB, Caetano R, Schafer J. **Religious affiliation, denominational homogeneity, and intimate partner violence among U.S. couples.** Journal for the Scientific Study of Religion 2002 Mar;41(1):139-51.

Cunradi CB, Caetano R, Schafer J. **Socioeconomic predictors of intimate partner violence among white, black, and hispanic couples in the United States.** Journal of Family Violence 2002 Dec;17(4):377-89.

Schafer J, Caetano R, Clark CL. **Agreement about violence in U.S. couples.** Journal of Interpersonal Violence 2002 Apr;17(4):457-70.

Antonio A. Rene, Ph.D.
Assistant Professor

Clark SE, Rene AA, Theurer WM, Marshall MA. **Association of body mass index and health status in firefighters.** Journal of Occupational and Environmental Medicine 2002 Oct;44(10):940-6.

Fulda KG, Licciardone JC, Rene AA, Blakley S. **A study of hepatitis A seropositivity in Dallas County, Texas, 1998 through 1999.** Texas Medicine 2002 Dec;98(12):50-5.

Lorich MF, Marshall MA, Walker W 4th, Clark SE, Rene AA, Ivanovskis G. **Line-of-duty injury or illness in an Air National Guard unit.** Military Medicine 2002 Sep;167(9):732-5.

Gregg S. Wilkinson, Ph.D.
Professor and Chair

Wilkinson, Gregg S., guest editor. **The nuclear energy industry.** Philadelphia: Hanley & Belfus; 2001. xii, p. 191-375 . (Occupational medicine, state of the art reviews; v. 16, no. 2).

Health Management and Policy

Peter E. Hilsenrath, Ph.D.
Associate Professor and Chair

Alves-Dunkerson JA, Hilsenrath PE, Cress GA, Widness JA. **Cost analysis of a neonatal point-of-care monitor.** American Journal of Clinical Pathology 2002 May;117(5):809-18.

Coyne JS, Hilsenrath PE. **The World Health Report 2000: can health care systems be compared using a single measure of performance?** American Journal of Public Health 2002 Jan;92(1):30, 32-3.

Culica D, Rohrer J, Ward M, Hilsenrath PE, Pomrehn P. **Medical checkups: who does not get them?** American Journal of Public Health 2002 Jan;92(1):88-91.

Schneiders S, Donham K, Hilsenrath PE, Roy N, Thu K. **Certified safe farm : using health insurance incentives to promote agricultural safety and health.** Journal of Agromedicine 2001;8(1):25-36.

Roderick S. Hooker, Ph.D.
Adjunct Associate Professor

Freeborn DK, Hooker RS, Pope CR. **Satisfaction and well-being of primary care providers in managed care.** Evaluation and the Health Professions 2002 Jun;25(2):239-54.

Henry L, Hooker RS, Statler M. **Physician assistant students and their cadavers : narratives on the gross**

anatomy experience. Perspective on Physician Assistant Education 2002 Winter/Spring;13(1):17-23.

Hooker RS. **A cost analysis of physician assistants in primary care.** JAAPA 2002 Nov;15(11):39-42, 45, 48 passim.

Hooker RS. **Physician assistant student gross anatomy costs.** Perspective on Physician Assistant Education 2002 Winter/Spring;13(1):39.

Hooker RS, Berlin LE. **Trends in the supply of physician assistants and nurse practitioners in the United States.** Health Affairs (Millwood) 2002 Sep-Oct;21(5):174-81.

Hooker RS, Hess B, Cipher DJ. **A comparison of physician assistant programs by national certification examination scores.** Perspective on Physician Assistant Education 2002 Summer/Autumn;13(2):81-6.

Hooker RS, Mayo HG. **Doctorial dissertations on nurse practitioners: 1970-2000.** Journal of the American Academy of Nurse Practitioners 2002 Jun;14(6):276-84.

Lin SX, Hooker RS, Lenz ER, Hopkins SC. **Nurse practitioners and physician assistants in hospital outpatient departments, 1997-1999.** Nursing Economics 2002 Jul-Aug;20(4):174-9.

Chiehwen E. Hsu, M.P.H, Ph.D.
Assistant Professor

Hsu CE, Lai D, Begley C, Franzini L. **The association between income and mortality in Texas and Taiwan : a comparative study of spatial statistics .** Advances and Applications in Statistics 2002 Aug;2(2):149-76.

Kristine A. Lykens, Ph.D.
Assistant Professor

Lykens KA, Jargowsky PA. **Medicaid matters: children's health and Medicaid eligibility expansions.** Journal of Policy Analysis and Management 2002 Spring;21(2):219-38.

M. Roy Schwarz, M.D.
Adjunct Professor

Schwarz MR, Wojtczak A. **Global minimum essential requirements: a road towards competence-oriented medical education.** Medical Teacher 2002 Mar;24(2):125-9.

Fernando M. Trevino, Ph.D., M.P.H.
Professor and Dean of School of Public Health

Bayona-Celis M, Montealegre F, Gomes de Andrade VL, Trevino FM. **Prognostic factors of severe asthma in Puerto Rico.** Puerto Rico Health Sciences Journal 2002 Sep;21(3):213-9.

Montealegre F, Bayona-Celis M, Chardon D, Trevino FM. **Age, gender and seasonal patterns of asthma in emergency departments of southern Puerto Rico.** Puerto Rico Health Sciences Journal 2002 Sep;21(3):207-12.

Social and Behavioral Sciences

Hector G. Balcazar, Ph.D. **Professor and Chair**

Hollen ML, Balcazar HG, Medina A, Ahmad N. **The North Texas Salud para su Corazon (Health for your Heart) Outreach Initiative: serving hispanics in Fort Worth and Dallas.** TPHA Journal 2002 Winter;54(4):5-12.

Soto Mas FG, Valderrama J, Balcazar HG. **[Smoking cessation: theory, research and practice].** Gaceta Sanitaria 2001 Dec;15 Suppl 4:49-54.

Soto Mas FG, Villalbi JR, Balcazar HG, Valderrama J. **La iniciacion al tabaquismo: aportaciones de la epidemiologia, el laboratorio y las ciencias del comportamiento [Smoking initiation: epidemiology, research, and behavioral sciences].** Anales espanoles de pediatria 2002 Oct;57(4):327-33.

Claudia Coggin, Ph.D. **Instructor**

Coggin C, Carlyon B. **Mohan Singh, the master, returns.** News & Views (Society for Public Health Education) 2002 Nov-Dec;29(6):7.

Frederick W. Fridinger, Dr.P.H. **Associate Professor**

Fridinger FW, Kirby S. **The "doublemint" factor : issues and challenges in marketing nutrition and physical activity behaviors in one program.** Social Marketing Quarterly 2002 Winter;8(4):40-52.

Fridinger FW, Macera C, Cordell HK. **The use of surveillance data and market research to promote physical activity.** American Journal of Preventive Medicine 2002 Aug;23(2 Suppl 1):56-63.

Li R, Fridinger FW, Grummer-Strawn L. **Public perceptions on breastfeeding constraints.** Journal of Human Lactation 2002 Aug;18(3):227-35.

Sue G. Lurie, Ph.D. **Assistant Professor**

Lurie SG. **Community experience as health and medical professional education.** Anthropology of Work Review 2001 Summer;22(2):11-4.

Lurie SG. **Community substance abuse prevention for youth: ethnographic assessment.** TPHA Journal 2002 Summer;54(2):5-7.

Lurie SG. **Global health policy, local realities: the fallacy of the level playing field [Review].** American Anthropologist 2002 Mar;104(1):387.

Lurie, SG. **Multicultural community mobilization and participatory research.** In: McDonald, TA, Orbe, MP, Ford-Ahmed, T, editors. Building diverse communities : applications of communication research. Cresskill, N.J.: Hampton Press; 2002. pp. 93-110.

Francisco G. Soto Mas, M.D., M.P.H.
Assistant Professor

Soto Mas FG, Valderrama J, Balcazar HG. **[Smoking cessation: theory, research and practice]**. Gaceta Sanitaria 2001 Dec;15 Suppl 4:49-54.

Soto Mas FG, Villalbi JR, Balcazar HG, Valderrama J. **La iniciacion al tabaquismo: aportaciones de la epidemiologia, el laboratorio y las ciencias del comportamiento [Smoking initiation: epidemiology, research, and behavioral sciences]**. Anales espanoles de pediatria 2002 Oct;57(4):327-33.

Valderrama J, Soto Mas FG. **El tabaquismo en los paises en vias de desarrollo (I)**. Noticias de Medicos del Mundo 2002 Jul;8(77):12-3.

Valderrama J, Soto Mas FG. **El tabaquismo en los paises en vias de desarrollo (II)**. Noticias de Medicos del Mundo 2002 Aug-Sep;8(78):12.

Ximena Urrutia-Rojas, Dr.P.H., R.N.
Assistant Professor

Urrutia-Rojas X, Bayona-Celis M, Ahmad N, Alvarez-Garriga C, Marruffo M, Menchaca J. **Factors associated with overweight and obesity in Fort Worth, Texas, school children**. Hispanic Health Care International 2002 Summer;1(1):31-41.

Students

Texas College of Osteopathic Medicine

Gheath Al-Atrash, D.O., Ph.D.

TCOM 2002 / Graduate School of Biomedical Sciences

Al-Atrash G, Shetty S, Idell S, Xue Y, Kitson RP, Halady PK, Goldfarb RH. **IL-2-mediated upregulation of uPA and uPAR in natural killer cells.** Biochemical and Biophysical Research Communications 2002 Mar 22;292(1):184-9.

Datta A, Kitson RP, Xue Y, al-Atrash G, Mazar AP, Jones TR, Goldfarb RH. **Combined chemo/anti-angiogenic cancer therapy against Lewis lung carcinoma (3LL) pulmonary metastases.** In Vivo 2002 Nov-Dec;16(6):451-7.

Michael J. Cutler

TCOM 2004 / Graduate School of Biomedical Sciences

Cutler MJ, Hamdan AL, Hamdan MH, Ramaswamy K, Smith ML. **Sleep apnea: from the nose to the heart.** Journal of the American Board of Family Practice 2002 Mar-Apr;15(2):128-41.

Adair de Berry-Carlisle, D.O.

TCOM 2003

de Berry-Carlisle A, Rainville KL, Mathis C. **Exercise and the "common cold of mental illness".** Texas D.O. 2002 Jun;40(6):8-10.

Sarang N. Desai, D.O.

TCOM 2003

Desai SN. **Acute glenohumeral dislocations : diagnosis and management.** Texas D.O. 2002 Oct;59(9):22-2.

Thomas D. Edwards, PA-C

TCOM 2004 / School of Public Health

Telford C, Edwards TD, Cipher DJ. **Performance in physical examination skills course as a predictor of students' risk for attrition.** Perspective on Physician Assistant Education 2002 Summer/Autumn;13(2):87-91.

Patricia Haibach, D.O.

TCOM 2003

Haibach P. **Lemierre's syndrome in a young adult.** Laboratory Medicine 2002 Mar;33(3):222-4.

Haibach P. **RBC morphology in urine [Letter].** Laboratory Medicine 2002 Aug;33(8):589-90.

Valeh Karimkhani, D.O.
TCOM 2003 / Graduate School of Biomedical Sciences

Hamdan MH, Barbera S, Kowal RC, Page RL, Ramaswamy K, Joglar JA, Karimkhani V, Smith ML. **Effects of resynchronization therapy on sympathetic activity in patients with depressed ejection fraction and intraventricular conduction delay due to ischemic or idiopathic dilated cardiomyopathy.** American Journal of Cardiology 2002 May 1;89(9):1047-51.

MonaLisa Mitra, D.O.
TCOM 2003

Mitra M, Stoll ST. **Post-traumatic headache of cervical origin.** AAO Journal 2002 Fall;12(3):38-41.

Wesley M. Theurer, D.O., M.P.H.
TCOM 2002 / School of Public Health

Clark SE, Rene AA, Theurer WM, Marshall MA. **Association of body mass index and health status in firefighters.** Journal of Occupational and Environmental Medicine 2002 Oct;44(10):940-6.

Graduate School of Biomedical Sciences

Wilson S. Chen, M.S.

Chen WS, Kitson RP, Goldfarb RH. **Modulation of human NK cell lines by vascular endothelial growth factor and receptor VEGFR-1 (FLT-1).** In Vivo 2002 Nov-Dec;16(6):439-45.

Joung-II Choi, Ph.D.

Choi JI, Conrad CC, Malakowsky CA, Talent JM, Yuan CS, Gracy RW. **Flavones from *Scutellaria baicalensis* Georgi attenuate apoptosis and protein oxidation in neuronal cell lines.** Biochimica et Biophysica Acta 2002 Jul 3;1571(3):201-10.

Choi JI, Malakowsky CA, Talent JM, Conrad CC, Gracy RW. **Identification of oxidized plasma proteins in Alzheimer's disease.** Biochemical and Biophysical Research Communications 2002 May 24;293(5):1566-70.

Paromita Das

Dibas MI, Gonzales EB, Das P, Bell-Horner CL, Dillon GH. **Identification of a novel residue within the second transmembrane domain that confers use-facilitated block by picrotoxin in glycine $\alpha 1$ receptors.** Journal of Biological Chemistry 2002 Mar 15;277(11):9112-7.

John Fuller

Wordinger RJ, Agarwal R, Talati M, Fuller J, Lambert W, Clark AF. **Expression of bone morphogenetic proteins (BMP), BMP receptors, and BMP associated proteins in human trabecular meshwork and**

optic nerve head cells and tissues. Molecular Vision 2002 Jul 15;8:241-50.

Joshua W. Gatson

Valderas MW, Gatson JW, Wreyford N, Hart ME. **The superoxide dismutase gene sodM is unique to *Staphylococcus aureus*: absence of sodM in coagulase-negative staphylococci.** Journal of Bacteriology 2002 May;184(9):2465-72.

Eric B. Gonzales

Dibas MI, Gonzales EB, Das P, Bell-Horner CL, Dillon GH. **Identification of a novel residue within the second transmembrane domain that confers use-facilitated block by picrotoxin in glycine α 1 receptors.** Journal of Biological Chemistry 2002 Mar 15;277(11):9112-7.

Zhen Guo

Cammarata PR, Schafer G, Chen SW, Guo Z, Reeves RE. **Osmoregulatory alterations in taurine uptake by cultured human and bovine lens epithelial cells.** Investigative Ophthalmology and Visual Science 2002 Feb;43(2):425-33.

Craig Hillburn

King GR, Pinto G, Konen J, Hillburn C, Tran S, Love W, Cayse R, Castro G. **The effects of continuous cocaine duration on the induction of behavioral tolerance and dopamine autoreceptor function.** European Journal of Pharmacology 2002 Jun 20;446(1-3):111-8.

Cassie L. Johnson, M.S.

Johnson CL, Lu D, Huang J, Basu A. **Regulation of p53 stabilization by DNA damage and protein kinase C.** Molecular Cancer Therapeutics 2002 Aug;1(10):861-7.

David M. Keller, M.S.

Ogoh S, Wasmund WE, Keller DM, Olivencia-Yurvati AH, Gallagher KM, Mitchell JH, Raven PB. **Role of central command in carotid baroreflex resetting in humans during static exercise.** Journal of Physiology 2002 Aug 15;543(pt. 1):349-64.

Wendi Lambert, Ph.D.

Sheedlo HJ, Srinivasan B, Brun-Zinkernagel AM, Roque CH, Lambert W, Wordinger RJ, Roque RS. **Expression of p75(NTR) in photoreceptor cells of dystrophic rat retinas.** Brain Research. Molecular Brain Research 2002 Jun 30;103(1-2):71-9.

Wordinger RJ, Agarwal R, Talati M, Fuller J, Lambert W, Clark AF. **Expression of bone morphogenetic proteins (BMP), BMP receptors, and BMP associated proteins in human trabecular meshwork and optic nerve head cells and tissues.** Molecular Vision 2002 Jul 15;8:241-50.

Michael C. Lawrence, Ph.D.

Lawrence MC, Bhatt H, Easom RA. **NFAT regulated insulin gene promoter activity in response to synergistic pathways induced by glucose and glucagon-like peptide-1.** Diabetes 2002 Mar;51(3):691-8.

Jae Kyung Lee

Lee JK, Jung JC, Chun JS, Kang SS, Bang OS. **Expression of p21WAF1 is dependent on the activation of ERK during vitamin E-succinate-induced monocytic differentiation.** Molecules and Cells 2002 Feb 28;13(1):125-9.

Wees Love

King GR, Pinto G, Konen J, Hillburn C, Tran S, Love W, Cayse R, Castro G. **The effects of continuous cocaine duration on the induction of behavioral tolerance and dopamine autoreceptor function.** European Journal of Pharmacology 2002 Jun 20;446(1-3):111-8.

Dongmei Lu

Basu A, Lu D, Sun B, Moor AN, Akkaraju GR, Huang J. **Proteolytic activation of protein kinase C-epsilon by caspase-mediated processing and transduction of antiapoptotic signals.** Journal of Biological Chemistry 2002 Nov 1;277(44):41850-6.

Johnson CL, Lu D, Huang J, Basu A. **Regulation of p53 stabilization by DNA damage and protein kinase C.** Molecular Cancer Therapeutics 2002 Aug;1(10):861-7.

Nicolette K. Muentner Swift, Ph.D.

Watenpaugh DE, Cothron AV, Wasmund SL, Wasmund WE, Carter R III, Muentner NK, Smith ML. **Do vestibular otolith organs participate in human orthostatic blood pressure control?** Autonomic Neuroscience 2002 Sep 30;100(1-2):77-83.

Evelyn J. Perez

Liu R, Yang SH, Perez EJ, Yi KD, Wu SS, Eberst K, Prokai L, Prokai-Tatrai K, Cai ZY, Covey DF, Day AL, Simpkins JW. **Neuroprotective effects of a novel non-receptor-binding estrogen analogue: in vitro and in vivo analysis.** Stroke 2002 Oct;33(10):2485-91.

Yang SH, Perez EJ, Cutright J, Liu R, He Z, Day AL, Simpkins JW. **Testosterone increases neurotoxicity of glutamate in vitro and ischemia-reperfusion injury in an animal model.** Journal of Applied Physiology 2002 Jan;92(1):195-201.

Grant Schafer

Cammarata PR, Schafer G, Chen SW, Guo Z, Reeves RE. **Osmoregulatory alterations in taurine uptake by cultured human and bovine lens epithelial cells.** Investigative Ophthalmology and Visual Science 2002 Feb;43(2):425-33.

Jeffery E. Squires, M.S.

Mallet RT, Squires JE, Bhatia S, Sun J. **Pyruvate restores contractile function and antioxidant defenses of hydrogen peroxide-challenged myocardium.** Journal of Molecular and Cellular Cardiology 2002 Sep;34(9):1173-84.

Bhooma Srinivasan

Sheedlo HJ, Srinivasan B, Brun-Zinkernagel AM, Roque CH, Lambert W, Wordinger RJ, Roque RS. **Expression of p75(NTR) in photoreceptor cells of dystrophic rat retinas.** Brain Research. Molecular Brain Research 2002 Jun 30;103(1-2):71-9.

Michelle Wright Valderas, Ph.D.

Valderas MW, Gatson JW, Wreyford N, Hart ME. **The superoxide dismutase gene sodM is unique to *Staphylococcus aureus*: absence of sodM in coagulase-negative staphylococci.** Journal of Bacteriology 2002 May;184(9):2465-72.

Mathew D. Woolard

Basu A, Johnson DE, Woolard MD. **Potential of tumor necrosis factor-alpha-induced cell death by rottlerin through a cytochrome-C-independent pathway.** Experimental Cell Research 2002 Aug 15;278(2):209-14.

Jones HP, Tabor LA, Sun XL, Woolard MD, Simecka JW. **Depletion of CD8+ T cells exacerbates CD4+ Th cell-associated inflammatory lesions during murine mycoplasma respiratory disease.** Journal of Immunology 2002 Apr 1;168(7):3493-501.

Shao Hua Yang, M.D.

Jung ME, Yang SH, Brun-Zinkernagel AM, Simpkins JW. **Estradiol protects against cerebellar damage and motor deficit in ethanol-withdrawn rats.** Alcohol 2002 Feb;26(2):83-93.

Liu R, Yang SH, Perez EJ, Yi KD, Wu SS, Eberst K, Prokai L, Prokai-Tatrai K, Cai ZY, Covey DF, Day AL, Simpkins JW. **Neuroprotective effects of a novel non-receptor-binding estrogen analogue: in vitro and in vivo analysis.** Stroke 2002 Oct;33(10):2485-91.

Yang SH, Perez EJ, Cutright J, Liu R, He Z, Day AL, Simpkins JW. **Testosterone increases neurotoxicity of glutamate in vitro and ischemia-reperfusion injury in an animal model.** Journal of Applied Physiology 2002 Jan;92(1):195-201.

Kun D. Yi, M.S.

Liu R, Yang SH, Perez EJ, Yi KD, Wu SS, Eberst K, Prokai L, Prokai-Tatrai K, Cai ZY, Covey DF, Day AL, Simpkins JW. **Neuroprotective effects of a novel non-receptor-binding estrogen analogue: in vitro and in vivo analysis.** Stroke 2002 Oct;33(10):2485-91.

School of Public Health

Naveed Ahmad, M.D., M.P.H.

Hollen ML, Balcazar HG, Medina A, Ahmad N. **The North Texas Salud para su Corazon (Health for your Heart) Outreach Initiative: serving hispanics in Fort Worth and Dallas.** TPHA Journal 2002 Winter;54(4):5-12.

Urrutia-Rojas X, Bayona-Celis M, Ahmad N, Alvarez-Garriga C, Marruffo M, Menchaca J. **Factors associated with overweight and obesity in Fort Worth, Texas, school children.** Hispanic Health Care International 2002 Summer;1(1):31-41.

Carolina Alvarez-Garriga

Urrutia-Rojas X, Bayona-Celis M, Ahmad N, Alvarez-Garriga C, Marruffo M, Menchaca J. **Factors associated with overweight and obesity in Fort Worth, Texas, school children.** Hispanic Health Care International 2002 Summer;1(1):31-41.

Robert Carter III, Ph.D.

Carter RIII, Wilson TE, Watenpaugh DE, Smith ML, Crandall CG. **Effects of mode of exercise recovery on thermoregulatory and cardiovascular responses.** Journal of Applied Physiology 2002 Dec;93(6):1918-24.

Watenpaugh DE, Cothron AV, Wasmund SL, Wasmund WE, Carter R III, Muentner NK, Smith ML. **Do vestibular otolith organs participate in human orthostatic blood pressure control?** Autonomic Neuroscience 2002 Sep 30;100(1-2):77-83.

Marco Marruffo

Urrutia-Rojas X, Bayona-Celis M, Ahmad N, Alvarez-Garriga C, Marruffo M, Menchaca J. **Factors associated with overweight and obesity in Fort Worth, Texas, school children.** Hispanic Health Care International 2002 Summer;1(1):31-41.

Amanda Medina

Hollen ML, Balcazar HG, Medina A, Ahmad N. **The North Texas Salud para su Corazon (Health for your Heart) Outreach Initiative: serving hispanics in Fort Worth and Dallas.** TPHA Journal 2002 Winter;54(4):5-12.

Author Index

- Acevedo, Miguel F., 32
Adams, Barbara D., 4
Agarwal, Neeraj, 1
Agarwal, Rajnee, 1
Ahmad, Naveed, 44
Ajani, Umed A., 34
Akopova, Irina S., 16
Al-Atrash, Gheath, 39
Alvarez-Garriga, Carolina, 44
Andreev, Oleg A., 16
- Balcazar, Hector G., 37
Basu, Alakananda, 17
Bayona-Celis, Manuel, 34
Bell-Horner, Cathy L., 24
Bergamini, Michael V. W., 24
Bhatt, Harshika, 17
Blake, Brooks M., 15
Blakley, Sally, 34
Blanck, Ronald R., 12
Borejdo, Julian, 17
Bowling, John R., 4
Broyles, Kathy, 3
Broyles, Michelle, 3
Brun, Anne-Marie, 1
Burgard, Daniel E., 4
- Caetano, Raul, 34
Cage, Clifton A., 5
Camarata, Patrick R., 2
Carroll, Joan F., 7
Carter, Robert, III, 44
Chen, Shande, 31
Chen, Wilson S., 40
Choi, Joung-II, 40
Chuang, Samuel S., 17
Cipher, Daisha J., 31
Clark, Abbot F., 17
Clark, Sharon E., 5
Clearfield, Michael B., 12
Coggin, Claudia, 37
Coleridge, Samuel T., 5
Collier, Robert J., 2
Conrad, Craig C., 18
Cutler, Michael J., 39
- Das, Hriday K., 24
Das, Paromita, 40
Davis, Suzanne B., 5
de Berry-Carlisle, Adair, 39
de Fiebre, Christopher M., 24
- de Fiebre, Nancyellen C., 24
DeLozier, Kim, 4
Desai, Sarang N., 39
DeSantis, Louis, 25
Dickson, Kenneth L., 32
Dillon, Glenn H., 25
Dimitrijevič, S. Dan, 8
Downey, H. Fred, 8
- Easom, Richard A., 18
Edwards, Thomas D., 39
- Forster, Michael J., 25
Franks, Susan F., 5
Fridinger, Frederick W., 37
Fulda, Kimberly G., 5
Fuller, John, 40
- Gamber, Russell G., 15
Garner, Margaret H., 2
Gatch, Michael B., 25
Gatson, Joshua W., 41
Gish, Eric E., 16
Goldfarb, Ronald H., 18
Gonzales, Eric B., 41
Goven, Arthur J., 32
Gracy, Robert W., 19
Grant, Geoffrey F., 30
Guo, Zhen, 41
- Hahn, Marc B., 30
Haibach, Patricia, 39
Hall, James R., 12
Harris, Ben G., 19
Hart, Mark E., 19
Hillburn, Craig, 41
Hilsenrath, Peter E., 35
Hooker, Roderick S., 35
Hsu, Chiehwen E., 36
Huang, Jie, 19
Huang, Ren-Qi, 26
Hudak, Paul F., 32
- Jackson, Debra W., 19
Ji, Minhe, 33
Jimenez, Cynthia, 12
Johnson, Cassie L., 41
Johnson, Lynn F., 4
Jones, Harlan P., 20
Jung, Marianna E., 26
- Karimkhani, Valeh, 40
Keller, David M., 41
Kennedy, James H., 33
Kim, Myoung H., 20
Kimbrough, Ywanda, 31
King, George R., 26
Kitson, Richard P., 20
Knebl, Janice A., 13
Konen, Jennifer, 26
Koulen, Peter, 26
Krishnamoorthy, Raghu, 27
Kumaresan, Pappa R., 20
Kyser, Cheryl K., 8
- La Point, Thomas W., 33
Lacko, Andras G., 20
Lambert, Wendi, 41
Lawrence, Michael C., 42
Lee, Jae Kyung, 42
Licciardone, John C., 6
Liu, Ran, 27
Love, Wees, 42
Lu, Dongmei, 42
Lurie, Sue G., 37
Lykens, Kristine A., 36
- Malakowsky, Christina A., 21
Mallet, Robert T., 8
Marruffo, Marco, 44
Marshall, Muriel A., 6
Martin, William J., II, 9
Mathew, Porunelloor A., 21
McCartney, Mitchell D., 2
McConathy, Walter J., 13
McGill, Jerry C., 16
Medina, Amanda, 44
Mitra, MonaLisa, 40
Moor, Andrea N., 2
Muenther Swift, Nicolette K., 42
- Nair, Maya, 21
- Oakford, Lawrence X., 2
Ogoh, Shigehiko, 9
Olivencia-Yurvati, Albert H., 30
Pagels, Patti, 6
Pang, Iok-Hou, 27
Paranjape, Sulabha, 13
Pastorcic, Martine G., 27
Perez, Evelyn J., 42

Pinto, Gail, 27
Pogoda, Janice M., 13
Prasanna, Ganesh, 28

Rao, Jagannatha, 21
Raven, Peter B., 9
Reeves, Rustin E., 2
Rene, Antonio A., 35
Reshetnyak, Yana K., 21
Romeo, Tony, 21
Roque, Rouel S., 3
Rubin, Bernard R., 14

Sanders, Mark A., 7
Schafer, Grant, 42
Schaller, Frederick A., 14
Schumacker, Randall E., 31
Schwarz, M. Roy, 36
Selvig, Meghan K., 28
Setty, Srinath, 10
Sharif, Naj A., 28
Sheedlo, Harold J., 3
Shores, Jay H., 4
Simecka, Jerry W., 22

Simpkins, James W., 29
Singh, Karan P., 31
Singh, Meharvan, 29
Smith, Michael L., 10
Smith-Barbaro, Peggy A., 7
Soto Mas, Francisco G., 38
Squires, Jeffery E., 43
Srinivasan, Bhooma, 43
Stockard, Alan R., 7
Stoll, Scott T., 16
Sun, Jie, 11
Sun, Xiang Le, 22
Suzuki, Kazushi, 22

Talent, John M., 23
Telford, Carolyn, 7
Theurer, Wesley M., 40
Tran, Sophie, 29
Trevino, Fernando M., 36
Trieff, Norman M., 33
Tune, Johnathan D., 11

Urrutia-Rojas, Ximena, 38

Valderas, Michelle Wright, 43
Vasenius, Keith A., 14

Waller, William T., 33
Wallis, Cleatus J., 7
Wasmund, Wendy E., 11
Watson, David G., 29
Weiner, Alan L., 23
Weis, Stephen E., 14
Wilkinson, Gregg S., 35
Willis, John M., 15
Woolard, Mathew D., 43
Wordinger, Robert J., 3
Wreyford, Natalie, 23

Xue, Yaming, 23

Yang, Shao Hua, 43
Yi, Kun D., 43
Yorio, Thomas, 29

Zong, Pu, 11